

NYPL RESEARCH LIBRARIES



3 0433 08254595 8

<http://stores.ebay.com/Ancestry-Found>

<http://stores.ebay.com/Ancestry-Found>

<http://stores.ebay.com/Ancestry-Found>

Labree  
Digitized by Microsoft® AGZ





# INTERNET ARCHIVE

Digitized for Microsoft Corporation  
by the Internet Archive in 2007.

From New York Public Library.

May be used for non-commercial, personal, research,  
or educational purposes, or any fair use.

May not be indexed in a commercial service.







# NOTABLE MEN

..OF..

## KENTUCKY

AT THE BEGINNING  
OF THE

## 20<sup>TH</sup> CENTURY

(1901-1902)

---

EDITED BY

BEN. LABREE,

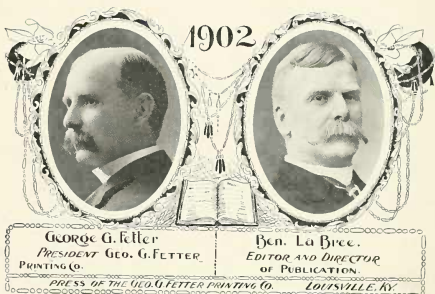
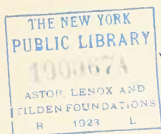
Author of "The Pictorial Battles of the Civil War," "Confederate Soldier in the Civil War," "Camp Fires of the Confederacy," "Battle Field and Quarter Deck;" Compiler of Admiral Porter's "Naval History of the Civil War;" Editor and Director of Publication of the "Historical Album Knights Templar,"  
&c., &c., &c.

---

PUBLISHERS.

GEO. G. FETTER PRINTING CO.

LOUISVILLE, KY.



## INTRODUCTION.

---

ONE OF AMERICA'S most distinguished citizens, referring to this work, declared it invaluable to him, because it brings into view, in compact shape, the faces of hundreds of his intimate friends and acquaintances, the contemplation of which affords him unbounded pleasure and gratification, besides including, as it does, an aggregation of Kentucky men who have in their respective fields or spheres earned a share of public notice by reason of their intellectual talents and business ability.

Men come upon the stage of life, play their respective parts in the great drama of time and events, and then pass away. Some, by reason of the impress which they make upon those of their time and generation, live on in history, while others—the greater number—die and are forgotten. The love of posthumous fame is inherent in most men. Those who attain to distinction in life are solicitous that such distinction be transmitted as a legacy to their descendants, and to posterity outside the bands of consanguinity. This is a noble instinct; one which prompts men to higher aims and deeds, and brings out of each his best and utmost endeavors to deserve the approbation of his fellow men.

We love to contemplate the success of friends in their respective vocations, and to dwell upon their virtues after they have gone off the stage of life. In no way can we obtain such a comprehensive and pleasurable view of them, their just fame, their virtues and accomplishments, as in a work like this.

The scope of the work and the time allotted rendered it impossible to include every man prominent in his respective vocation, but we have, we feel assured, presented within these pages a very great number of the men who have made their mark, in various ways, in the State of Kentucky.

On account of the great space it would have required, the titles and explanations are not lengthy. In every instance they have been condensed to between four and seven lines. This brevity was rendered necessary in order to prevent the work assuming a size too voluminous. In



addition to the portraits, their titles and classifications, there is in this volume an index divided into two sections, the first containing the names, the second the topics or vocations.

At first glance this might appear to be a plain, simple compilation, but the preparation of these 228 pages required nearly eighteen months of patient labor, and the work will, we feel assured, receive the approbation of all who take an interest in biography. The title, "Notable Men of Kentucky," is used in its broadest sense. It has been interpreted to mean those who, whether born within the limits of the Commonwealth or not, represent interests or connections within its borders, or who have served to illustrate or illumine the progress of the State. That the work is not complete nor perfect is admitted. It is hoped, however, that, as a whole, it will receive general approval, because of the fact that it brings together, at one view as it were, the faces of so many who are worthy representatives of their fellowmen in the several walks of life.

The uses of a work of this kind are unlimited. Aside from the personal satisfaction or pleasure it affords, it will prove invaluable as a reference book for libraries, newspaper offices, counting rooms, and generally in the homes and places of business of people everywhere. During the compilation of the work, some of its subjects have passed away, both young and middle-aged. As the years slip by, others will go, and the steady procession to the grave will go on until all whose faces appear within these pages shall have paid the last great debt of nature. Future generations will then pick up the book, and contemplate with renewed interest the faces of those on the pages within it. Looking backward as they gaze, will rise into view those who, in their day and generation, illustrated the genius and business effort of their time, and who, by their merits and accomplishments, were entitled to be preserved within the pages of "Notable Men of Kentucky."

#### PRINTING.

The printing of a book like this, aside from the great amount of labor bestowed in the collection of its subjects, and their arrangement, is a notable undertaking for any publishing house. Each sheet impression is from a form of sixteen pages, containing 64 portraits, every one of which must be shown up to its full value. The press work must be A-1, or this value, or acme of excellence, can not be satisfactorily set out to the eye. The ordinary high speed press of the newspaper can rush its forms

through. But where there are artistic features to be sought, or produced, the matter of time and speed are minor considerations.

In fine book-making, the most perfect register and impression are absolutely necessary; else, the end sought will fail of materialization. Hence, only the finest and most perfect presses are used.

This volume of but fifteen different forms—50,000 30 x 40 inch sheets,—on which a modern press has been engaged for several months, will afford some idea of the difference between book and newspaper work. The printing was done by the Geo. G. Fetter Printing Co. The style of its execution speaks for itself, and will bear the inspection of the most critical connoisseur on the art of book-making.

### PHOTOGRAPHS AND ENGRAVING.

Over nine hundred portraits, made by the skilled engravers of the Heybach-Bush Co., make this the most comprehensive collection of true likenesses ever published for any State except New York. These portraits are all exact reproduction of photographs from life, made by such eminent artists as:

Doerr,	Wybrant,	Munfort,	McFadden,
Klauber,	Mullen,	Fox,	Bowles,
Johnston,	Schlegel,	Miller,	Gunther,
Asmus,	Johns,	Standiford,	Fearnaught,
Thuss & Lind,	Jones,	Spengler,	Wolff, and others.

More than eight hundred of such original photographs were made for this collection, and in order to make a reasonably satisfactory selection, it was found necessary to accumulate nearly fifteen hundred photographs. The pictures have been classified into groups, affording at a glance a coterie of those who have been, or are, conspicuous in any particular vocation.

THE EDITOR.

# INDEX TO PORTRAITS.

## A

### PAGE.

Abram, W. J.	191
Ackerman, Rev. Oscar, D. C. L.	21
Ackerman, Philip	211
Adams, Walter S.	157
Ahrens, Theodore, Sr.	157
Albers, Dr. Henry	109
Allen, F. S.	140
Allen, John R.	55
Anderson, Joseph Ray, M. D.	100
Anderson, F. Paul	35
Anderson, Simrall, M. D.	93
Arnett, L. W.	79
Ashbrook, S. J.	132
Asmus, Woldemar	129
Averdick, James Andrew, M. D.	101
Avery, George C.	166
Avritt, Samuel	70

## B

Bailey, William O., M. D.	92
Baird, Thomas	189
Baker, Thomas H., M. D.	49
Baker, William A.	153
Baker, Rev. J. H.	27
Ballard, Capt. R. H.	157
Banks, David	136
Bannon, William P.	163
Barclay, Douglas	186
Barnes, W. W., M. D., D. D. S.	105
Barnett, Cicero M.	41
Barr, John W., Jr.	142
Barr, Thomas D.	161
Barret, James S.	125
Barrow, David, M. D.	96
Barth, Paul C.	228
Bartholomew, Prof. Wm. H.	38
Bax, Very Rev. Lawrence	20
Baxter, Wm. Edwards, M. D., D. D. S.	168
Beavers, Jas. M. S.	171
Beckham, Gov. J. C. W.	48
Bell, James E.	154
Bell, John M.	136
Benners, James Weyms, M. D.	85
Bennett, Diller	196
Bennett, John	196
Bernheim, Bernard	209
Berhel, Joseph C.	188
Biles, John W.	213
Birch, G. Allen	214
Blackburn, Joseph C. S.	44
Blackwell, Thomas	130
Blanton, Rev. L. H., D. D.	31
Bloom, I. N. A. B., M. D.	83
Bodine, James Mortison, M. D.	83
Boldrick, George D.	109
Bonnie, Robert P.	207
Bonnie, William O.	207
Bornwasser, Louis P.	214
Bosse, Henry, Jr.	216
Bontelle, Walter W.	117
Poyd, J. C. A.	149
Braeken, Rev. T. A., D. D.	22
Brady, J. Henry	118
Bradbury, William H.	189
Bradley, William O.	63
Bradley, Dr. S. A.	109
Brashear, Earle J., M. D.	97
Breckel, Charles F.	115
Breckinridge, Robert L.	49
Breckinridge, W. C. P.	64

## B

### PAGE.

Brennan, Capt. John	158
Brewer, Wm. B.	116
Bridges, Charles A.	219
Bridges, Isham	219
Brinly, John L.	166
Brinly, Thomas C.	166
Brown, Creel	208
Brown, Davis	208
Brown, Eli H.	72
Brown, Hewett	208
Brown, James B.	19
Brown, John Mason	73
Brown, Rev. John T.	28
Brown, J. T. S., Jr.	208
Brown, J. T. S., Sr.	208
Brown, John Young	63
Brown, M. H., M. D.	108
Brown, Robert W.	111
Bruce, Horatio W.	67
Bruner, Ben L., M. D.	102
Bryan, James W.	63
Buckmaster, R. P.	104
Buckner, James M.	220
Burnam, A. R.	47
Burnam, Curtis F.	71
Burton, Rt. Rev. Lewis William, D. D.	17
Busath, Anton	204
Bush, Sam Stone	123
Bush, Frank P.	161
Busehemyer, William G.	184

## C

Cabell, Rev. B. F.	35
Cabell, John M.	35
Cabwell, A. J.	191
Caldwell, John W.	139
Caldwell, Julius	152
Caldwell, Peter	37
Campbell, Rev. Daniel S., D. D.	29
Campbell, Pike	202
Cantrell, J. Campbell	53
Carson, Robert C.	123
Carter, A. P.	57
Carter, John A.	188
Carter, Lillard	48
Cartledge, A. Morgan, M. D.	89
Caruth, Asher G.	72
Castleman, Brig-Gen. John B.	146
Castleman, Breckinridge	146
Caunissar, Thomas C.	177
Cawlen, Madison J.	112
Cecil, C. P., Jr.	224
Cecil, John G., B. S., M. D.	83
Chamberlain, Ed. W.	181
Chatterson, J. Marshall	69
Chenault, John P.	50
Chenoweth, Henry, M. D.	87
Chenoweth, James S., M. D.	89
Cherry, H. H.	39
Cherry, T. C.	39
Clark, Edward B.	189
Clark, James S.	180
Clark, James, Jr.	155
Clarke, F. H., M. D.	96
Cobb, Arthur	159
Cochran, Andrew M. J.	40
Cochran, Joseph S.	167
Coleman, Joseph S.	170
Collis, Rev. Mark D. D.	28
Colston, R. T.	62

## C

	PAGE.
Conner, J. W.	160
Conrad, Theophile	181
Cook, Arthur B.	102
Cook, A. C. D. D. S.	106
Cooke, Lyttleton	67
Cook, W. S.	132
Coon, George S., M. D.	90
Cooper, A. R.	200
Cooper, J. M.	56
Cord, William H.	26
Coulter, Gus. G.	48
Covington, Joseph G.	61
Cox, Attila, Jr.	69
Cox, Attila	143
Cox, Luke O.	125
Cox, William N.	154
Craddock, J. Giveus	113
Craft, Joseph A.	41
Craig, Thomas P.	59
Craik, Rev. Charles Ewell, D. D.	18
Crane, William F.	183
Crockett, T. Hiter	61
Croft, George W.	87
Cross, George	190
Cross, George E.	190
Crush, Charles L.	195
Cummins, Rev. Thomas, D. D.	22
Cunningham, Richard H.	65
Cuscaden, George W.	204
Cusick, J. L.	119

## D

Danforth, George L.	146
Danley, Rev. W. S., D. D.	231
Darby, P. H.	71
Dargan, Rev. Edwin C., D. D.	30
Daenble, F. Wm.	169
Daenble, John G.	169
Danzberry, J. W., D. D. S.	105
Danzberry, W. H., M. D.	130
Davidson, John Caldwell	149
Davis, Willis P.	168
Dawes, Rev. Bourbon A., D. D.	26
Deboe, William J.	44
DeFuniak, F. R., Jr.	43
DeHaven, Frederick, M. D., D. O.	104
Denhard, Brooks	184
Dial, J. M.	78
Dickey, E.	139
Dickson, Frank C.	195
Dilly, Oscar C., P. H. G., M. D.	88
Dixon, Archibald, M. D.	99
Dodd, William J.	159
Doerhoefer, John	125
Doerr, J. Henry	120
Doherty, William B., M. D.	92
Dorsey, Charles W.	147
Downing, George Crutcher	37
Downs, George F.	164
Drake, C. S.	149
Dudley, Rt. Rev. Thomas Underwood, D. D., LL. D.	17
Duke, Basil W.	64
Dumesnil, Harry	188
Duncan, Ellis, Dr.	59
Duncan, Henry, T.	58
Dunn, Jesse T., M. D.	88
DuRelle, George	47
Durham, Ben. J.	226
Durrett, Reuben T., A. M., LL. D.	65

## E

Eager, Rev. George B., D. D.	30
Early, Charles C.	145
Eaton, Rev. Thomas T., D. D.	25

## E

	PAGE.
Edeken, T. L.	75
Ehrmann, Hilmar	210
Ely, Rev. J. Calvin, D. D.	33
Embry, Henry F.	214
Enelow, Rev. H. G., D. D.	29
Ernst, Richard P.	66
Erpeldinger, Frank	203
Escott, Jas. S.	124
Estes, T. M.	182
Estill, Rev. Beverly, D. D.	18
Evans, Thomas Crain, M. D.	85
Evans, Walter	40

## F

Fallis, Robert G., M. D.	84
Farr, B. Jones, M. D.	91
Farris, M. J.	132
Faulds, David P.	118
Felix, Rev. Joseph S.	27
Fenley, Oscar	126
Fennell, Edward	51
Fenner, Rev. Harlan K., D. D.	21
Ferguson, Edwin H.	179
Ferguson, J. P., A. M., M. D.	84
Fetter, Geo. G.	114
Fitchner, Edward D.	160
Fisher, J. B.	58
Fitch, B. F. D.	62
Fitzgerald, Rev. Edward Shields	20
Ford, Arthur Y.	111
Fort, Frank T., M. D.	82
Frank, J. P.	224
Frank, E. Carl	221
Franklin, Robert B.	55
Franks, E. T.	41
Fritschner, George	198
Frogge, S. L., A. B., A. M.	28
Frost, Rev. William Goodell, D. D., P. H. D.	36
Fruit, Edgar Newton, D. D. S.	106
Fuller, Charles C.	158
Fuqua, William M., M. D.	101

## G

Gaertner, Philip A.	73
Galleher, Paul C.	43
Galvin, John W., M. D.	87
Gardner, Clarence R.	152
Garman, Prof. Harrison	34
Garr, Benjamin A., M. D.	91
Garrett, Edward	137
Garrison, R. L.	38
Gathright, Josiah B.	174
Gathright, Owen	174
Gatterdam, Joseph	215
German, Edward C.	114
Gilbert, George G.	45
Glenn, D. A.	55
Goldstein, Dr. G.	108
Goodwin, Edward L.	178
Goodwin, Henry U.	118
Grabfelder, Samuel	205
Grainger, Charles F.	58
Grant, Thomas Page, M. D.	94
Grant, H. Horace, A. M., M. D.	82
Grant, William E., M. D., D. D. S.	105
Graves, Jacob H.	128
Graves, Rev. A. C., D. D.	25
Gray, W. B.	155
Gray, Rev. B. D., A. M., D. D.	31
Green, Frank Karrick, M. D.	102
Greene, Thomas E.	56
Griffith, D. M., M. D.	100
Grisby, W. E.	79
Gristead, William E.	38
Gunsberg, William E.	224

## G

## PAGE.

Grubbs, Charles S. ....	70
Grubbs, Rev. Isaiah B. ....	82
Guest, James W., M. D. ....	91
Guffy, B. L. D. ....	46
Guilfoyle, Edward A. ....	198
Gunther, F. T. ....	234

## H

Hager, S. W. ....	49
Hagerman, B. C., A. M. ....	33
Haggard, Rodney ....	76
Haldeman, Bruce ....	110
Haldeman, Walter N. ....	110
Haldeman, Wm. B. ....	110
Hale, Rev. Frederick Douglas, D. D. ....	25
Haley, Percy ....	50
Hall, George C., Jr. ....	136
Hamilton, Rev. William Wistar ....	26
Hansbro, W. L., D. D. S. ....	106
Harbison, John J. ....	174
Hardesty, S. A. ....	202
Hardwick, Frederick W. ....	179
Hardy, James Edward ....	165
Harlan, Samuel F. ....	60
Harned, Mark R. ....	171
Harper, George B. ....	156
Harris, John G. ....	224
Hawes, Rev. Thompson M., D. D. ....	22
Hawley, Rev. Fred V., D. D. ....	24
Hays, Edwin W. ....	126
Hazelrigg, James H. ....	63
Head, Benj. T. ....	135
Head, J. Samuel, Jr. ....	135
Head, Richard C. T. ....	135
Heald, Frank J. ....	171
Hedden, S. C. ....	194
Hegewald, John F. C. ....	181
Heissman, Mark H. ....	79
Helm, Charles J. ....	67
Hemphill, Rev. Charles, D. D. ....	22
Hendrick, J. Buford ....	140
Hendrick, John K. ....	68
Hendrix, Joseph Leonard ....	128
Herman, Charles ....	155
Herr, Robert W. ....	60
Hersey, Major Henry B. ....	43
Hesner, Henry, M. D. ....	84
Hewett, Fayette ....	130
Hickman, George W. ....	53
Hickman, Richard Baylor ....	168
Hill, C. B. ....	48
Hill, Edward George ....	211
Hill, Reuben D. ....	49
Hindman, Biscoe ....	148
Hite, William W. ....	156
Hoblitzell, Bruce ....	151
Hobson, J. P. ....	46
Hobson, V. H., A. M., M. D., D. D. S. ....	107
Hooker, T. Logan ....	150
Hoerter, Will F. ....	215
Hogarty, Very Rev. Joseph A. ....	20
Hoge, Charles E. ....	130
Hoke, Rev. Peyton Harrison, D. D. ....	24
Hoke, William B. ....	54
Holcomb, Rev. Steve P. ....	27
Hollenbach, August ....	210
Hollinshead, Theodore H., M. D. ....	20
Holmes, Samuel B. ....	42
Hord, William T. ....	234
Howard, Younger, M. D. ....	86
Hudson, Rev. Leslie H., D. D. ....	24
Hughes, John C. ....	185
Hughes, John T. ....	221
Huhlein, Charles F. ....	166
Hulsewede, Charles G. ....	78
Hume, E. E., M. D. ....	98
Hunt, George Robinson, Jr. ....	123
Hurt, Benjamin H. ....	241
Hutchings, John Bacon ....	159

## I

## PAGE.

Irvine, Joseph W. ....	225
Irwin, Harvey S. ....	45

## J

Jackson, J. B., M. D. ....	97
James, David H. ....	128
Jefferson, Henry, T. ....	191
Jefferson, Thomas L. ....	178
Jenkins, Rev. Burris A. ....	32
Johnson, George E. ....	111
Johnson, L. F. ....	80
Johnston, J. Stoddard ....	112
Johnston, William A. ....	122
Joiner, Harvey ....	119
Jones, Benjamin B. ....	39
Jones, Rev. Carter Helm, D. D. ....	25
Jones, Rev. E. Pendleton, D. D. ....	27
Jones, Lawrence ....	123
Jones, Simon N. ....	199

## K

Kaelin, Lewis, M. D. ....	86
Kavanaugh, Frank K. ....	52
Kehoe, James N. ....	45
Keller, D. H., M. D. ....	94
Keller, Harvey S., M. D. ....	91
Keller, Green R. ....	68
Kellner, John F. ....	212
Kellner, Frederick F. ....	212
Kelly, I. W., E. S. ....	140
Kelly, Robert M. ....	113
Kelly, Robert M., Jr. ....	108
Kelsall, Oliver Holt, A. M., M. D. ....	85
Kendrick, George P. ....	184
Kendrick, Wm. C. ....	184
Kennedy, Hanson ....	54
Kennedy, Orville A., B. S., M. D. ....	86
Kiefer, John ....	225
Kincaid, Robert C. ....	70
King, Lloyd A., D. D. S. ....	106
King, C. L. ....	131
Kiser, J. D., M. D. ....	97
Klauber, Edwin ....	120
Klein, John W. ....	204
Kleiser, A. H., M. D. ....	100
Kline, Orland S. ....	151
Klusmeier, Frederick ....	226
Knott, Richard W. ....	112
Kobert, Charles ....	206
Koehler, Henry ....	196
Koop, William E. ....	165
Kremer, John W., M. D. ....	84

## L

LaBach, Prof. J. O. ....	34
LaBree, Ben. ....	115
LaVielle, W. R. R. ....	154
Lancaster, J. A. ....	177
Lancaster, R. B. ....	133
Layer, Gottlieb ....	215
Leachman, George C., M. D. ....	93
Leachman, William T., M. D. ....	93
Leavell, Hugh N., M. D. ....	93
Leigh, Ed. O. ....	51
Leonard, A. C., M. D. ....	95
Leonard, S. N. ....	338
Letcher, Ben. M. D. ....	99
Letcher, James Hughes, M. D. ....	99
Lewis, Charles M. ....	116
Lewis, Fred N. ....	124

## L

	PAGE.
Lewis, John C.	187
Lewis, John W.	71
Lewis, Thomas Stone, M. D.	85
Lewman, George W.	126
Levy, Henry	194
Libbard, E. T.	51
Land, Frank C.	121
Lindsay, William	44
Lindsay, Daniel W.	88
Lippold, Ben F.	116
Lithgow, James S.	164
Little, H. R.	138
Little, Lucius P.	65
Lloyd, Rev. William F., D. D.	29
Logan, Emmet G.	111
Long, George J.	167
Lortz, Gustave N.	160
Loving, Hector V.	144

## M

Maas, John, Jr.	216
Mahon, J. C.	142
Malone, John T.	142
Mann, Jesse E.	90
Mansfeld, Robert	177
Marcus, Edward H.	162
Marshall, Robert L.	228
Marret, Joseph E.	223
Mather, Logan L.	170
Mathews, Joseph McDowell, M. D., LL. D.	81
Mayer, Alf. E.	227
Mayer, Walter S.	227
Meacham, Charles M.	113
Meehan, Michael J.	175
McEbert, William H.	199
Mendel, Charles C.	172
Mengel, Charles C., Jr.	175
Mengel, Clarence R.	175
Menk, Theodore	212
Menne, Frank A.	178
Meriweather, William A.	152
Merritt, Montgomery	68
Merrivether, Jacob F.	160
Metzner, Edward F.	153
Middleton, John A.	128
Miller, Barry	202
Miller, P. Galt	164
Miller, Shackelford	54
Miller, Wallace G.	178
Miller, W. Scott	200
Milligan, Alexander R.	32
Minary, T. J.	156
Mitchell, James A.	73
Mitchell, James C., M. D.	103
Mitchell, Walter S.	227
Monroe, A. Leight, M. D.	90
Montenegro, Antonio C.	199
Montgomery, H. P.	199
Moody, Claude D.	150
Moore, Daniel L.	127
Moore, George C.	56
Moore, Hughes	197
Moore, James H., M. D.	98
Morris, George W.	145
Morris, Jackson	57
Morrison, Rev. Henry Clay, D. D.	17
Moses, Rev. Adolph, D. D.	29
Mounsey, Geo. T., M. D.	87
Mourring, Garland H.	186
Mourning, William H.	187
Muckelbauer, John A.	119
Mueller, Hans	206
Muench, Julius	203
Muldon, Michael	180
Mullen, James	120
Mullen, Willis S.	150
Mullins, Rev. Edgar Y., D. D., LL. D.	20
Mulligan, David B.	200
Mulligan, George E.	200
Mulligan, James H.	164

## M

	PAGE.
Mulliken, S. A.	116
Munu, Abraham G.	165
Murray, David R.	50
Murray, Logan C.	125
McChesney, H. V.	49
McCord, R. C., M. D.	101
McCord, C. C.	50
McClarty, Clinton C.	126
McCluskey, Rt. Rev. William George, D. D.	17
McClure, William B., M. D.	96
McCroary, James E.	44
McCulloch, J. W.	205
McCutcheon, J. M.	139
McDermott, Edward J.	67
McDowell, Stuart	183
McDowell, R. A.	79
McDowell, William P.	42
McGarvey, Rev. J. W.	32
McGarvey, J. Wheeler	74
McGinnis, E. G.	222
McKay, Wallace	76
McKay, E. E.	80
McKernan, Frank L.	148
McKnight, William H.	189
McMurtry, Lewis S., A. M., M. D.	81
McQuown, Lewis	73

## N

Nall, Ion Beverly	49
Nanz, Henry	223
Nary, C. E.	197
Neff, Paul A.	225
Nelson, Charles L.	150
Nelson, H. E.	104
Netherland, William H.	108
Noe, William B.	131
Nollan, Rev. Lewis G.	21
Nones, William C.	173
Nones, Seth M.	173
Norton, Charles B.	187
Norton, George C.	186
Nuetzel, Fred O.	173

## O

Oberchain, W. A., A. M.	33
Obrecht, Rt. Rev. Edmund M., O. C. R.	19
O'Brien, Edward J.	219
Oertel, John Fred	212
Offutt, Hyman	177
Ogden, Charles F.	62
Oldham, Charles Kavanaugh	153
O'Neal, Joseph T.	66
O'Rear, E. C.	47
Orendorf, Henry, M. D.	88
Ormsby, Henry D.	124
Owens, Cleon C.	52

## P

Palmer, J. Brent, M. D.	103
Palmer, William	213
Parsons, Clarence W.	61
Parsons, Frank	55
Patterson, Prof. J. K., Ph. D., LL. D.	34
Patterson, William, Jr.	210
Paynter, Thomas H.	46
Peak, J. Hunter, M. D.	103
Peak, R. F.	56
Peak, W. F.	131
Pearce, Edward Lee, M. D.	103
Pearson, Edward C.	217
Pearson, Lorenzo P.	217
Peck, Tom B.	134

P	PAGE.
Pell, William B. ....	162
Penrod, Rev. W. K., D. D. ....	26
Perkins, Rev. Edmund T., D. D. ....	18
Peter, Prof. Alfred M. ....	35
Peter, Robert Arthur ....	183
Pettit, Charles H. ....	194
Pfeiffer, Charles C. ....	164
Phingst, Ferdinand J. ....	220
Phelps, James S., Sr. ....	219
Pike, Very Rev. W. D. ....	20
Pirtle, Alfred ....	147
Pirtle, James S. ....	69
Pirtle, John B. ....	148
Pope, Curran, M. D. ....	94
Portman, M. R. ....	218
Poschinger, Mathias ....	182
Potter, J. E. ....	141
Potter, J. Whit ....	141
Potter, William J. ....	141
Powell, Rev. Edward L., D. D. ....	28
Powell, James W. ....	146
Powers, J. D. ....	144
Pritchett, William Henry, A. M. ....	36
Puls, Henry A. J. ....	197

Q	PAGE.
Quinn, William A., M. D. ....	99
Quisenberry, J. A. ....	132

R	PAGE.
Raffo, Rev. Charles P. ....	19
Rains, James M. ....	154
Ramey, Henry S. ....	183
Rau, William G. ....	161
Ray, Charles A. ....	122
Ray, W. Wade, M. D. ....	52
Rayburn, W. K. ....	134
Reager, H. P. ....	148
Reavis, Rev. J. Overton ....	23
Reese, J. Ed. ....	114
Reimers, Edward G. ....	223
Reiss, George ....	107
Renfro, Wallace ....	119
Revennauth, A. O. ....	137
Revill, J. C. ....	42
Reynolds, C. O. ....	82
Reynolds, Dudley S., A. M., M. D. ....	226
Rice, Laban M. ....	194
Richardson, Orlando C. ....	131
Richard, James M. ....	73
Riddell, Robert ....	199
Ridgim, John L. ....	53
Riddon, Stephen A. Douglas ....	218
Roach, W. Douglas ....	92
Roberts, David Yandell, M. D. ....	113
Roberts, Samuel J. ....	31
Roberts, Rev. Wm. Charles, D. D., LL. D., S. T. D. ....	190
Roberts, William Owen, M. D. ....	180
Robertson, A. B. ....	187
Robertson, Albert S. ....	193
Robinson, Alexander G. ....	185
Robinson, A. Lee ....	192
Robinson, Arch M. ....	193
Robinson, Charles Bonnycastle ....	192
Robinson, Charles P. ....	193
Robinson, George A. ....	192
Robinson, R. A. ....	192
Robinson, Richard Alexander, Sr. ....	185
Robinson, William Alexander ....	192
Robinson, William Meade ....	217
Robinson, Worthington ....	127
Roche, John E. ....	145
Rodman, H. D. ....	100
Rodman, J. J., M. D. ....	100
Roe, Charles C. ....	76
Rockfin, Oscar H. ....	76

R	PAGE.
Rohrman, John ....	197
Rowell, J. Kirk ....	161
Rowland, Edward ....	188
Rubel, Thomas H. ....	173
Ruedeman, William ....	207
Ruggles, James W. ....	179
Rumyan, Charles E. ....	226
Russell, D. H. ....	209
Ryan, Capt. Francis M. ....	157

S	PAGE.
Sampey, Rev. John R., D. D. ....	30
Samuel, Fonce W., A. M., M. D. ....	88
Sanaman, J. H. ....	163
Sanders, Henry V. ....	143
Sandifer, Henry G. ....	132
Sapp, Charles E. ....	217
Schildt, John C. ....	210
Schimpeler, Charles ....	122
Schlegel, Louis ....	117
Schmidt, Karl ....	198
Schoening, Henry, Jr. ....	197
Schoppenhorst, F. W. ....	216
Schoppenhorst, Henry ....	89
Scott, Prescott Brown, A. M., M. D. ....	34
Seavell, Prof. M. A. ....	141
Sears, W. A. ....	107
Seebolt, C. L., D. D., S. ....	201
Seelbach, Charles ....	201
Seelbach, Julius C. ....	201
Seelbach, Louis ....	201
Seelbach, Otto ....	52
Schon, George L. ....	118
Selbert, Andrew E. ....	117
Selby, George B. ....	180
Semple, Alex. L. ....	175
Sengel, Philip ....	211
Senn, Frank ....	211
Senn, Frank P. ....	47
Shackelford, Samuel J. ....	69
Shelds, Charles H. ....	136
Shelley, E. M. ....	80
Shreve, Hiram ....	43
Shulhafer, Isadore L. ....	163
Shulhafer, Simon ....	137
Simmons, William ....	72
Simpson, George F., M. D. ....	202
Simrall, John G. ....	85
Skain, John ....	209
Skilman, Henry M., M. D. ....	167
Slack, John W. ....	195
Slattery, John J. ....	216
Slavghter, William H., Jr. ....	18
Smith, Al. S. ....	143
Smith, Rev. George Grant ....	135
Smith, J. Lithgow ....	105
Smith, W. B. ....	179
Smith, Wm. Scott, M. D., D. D., S. ....	129
Smyser, Jacob L. ....	162
Sneed, S. K. ....	129
Snyder, Charles M. ....	98
Soaper, R. H. ....	222
Soaper, J. G., M. D. ....	191
Spalding, Charles C. ....	28
Speed, James B. ....	122
Spencer, Rev. I. J., D. D. ....	226
Spengler, Franz Joseph ....	91
Sperry, David B. ....	153
Stanley, S. E., M. D. ....	145
Steber, Alexis F. ....	77
Steedman, James B. ....	142
Stephenson, William W. ....	195
Stites, John ....	176
Strater, Charles G. ....	176
Strater, Henry ....	151
Strater, William E. ....	78
Stratton, John A. ....	215
Stratton, Oliver H. ....	215
Straus, Henry R. ....	117
Strauss, John Mason ....	117



## S

	PAGE.
Streng, Manuel J.	185
Strother, John C.	75
Stucky, Harry	62
Stucky, J. A., M. D.	97
Stucky, Thomas H., A. M., M. D.	81
Summers, George G.	181
SweARINGEN, Embury L.	144
Sweets, Rev. Henry H.	23

## T

Tapp, Presley H.	171
Tatum, Clifton	218
Taylor, Bushrod W.	156
Taylor, E. H., Jr.	53
Taylor, Hancock	151
Taylor, Prof. H. K.	37
Taylor, John F., M. D.	102
Taylor, Marion E.	205
Tenney, O. S.	64
Terstegge, Henry	174
Terr, Alvah L.	186
Thorp, William H.	37
Theobald, Griffin P.	148
Thierman, Henry A.	207
Thomas, Major Barak G.	221
Thomas, Calvin F.	196
Thomas, Jefferson	158
Thomas, W. J.	124
Thompson, Catlett W.	138
Thompson, Anthony V.	172
Thorne, William P.	66
Thum, Frederick C., M. D.	86
Thuss, W. G.	121
Timberlake, Thomas C.	147
Tipton, W. H.	128
Trabue, Willett C.	149
Trice, John B.	133
Trice, Stephen E.	133
Trimble, South	45
Tuley, Henry Enos, A. B., M. D.	83
Turner, Oscar	76

## U

Uri, Nathan M.	209
----------------	-----

## V

Vance, Ap Morgan	89
Vance, Burton	77
Vance, Robert D.	75
Vance, S. B.	75
Vaometer, Solomon Lee	57
Vaughan, W. Nick	61
Voght, Clarence H., M. D.	101
Veech, Bethel B.	144
Vogt, Adam	169
Vogt, Charles C.	176
Vogt, Henry	169
Vogt, Rudolph F.	176
Volkarding, Herman	205

## W

Walker, Herbert G.	223
Wallace, Christopher K., M. D.	102
Wallace, Lew G.	51
Wallace, W. M.	221
Walter, Frank	213
Walter, John E.	213
Waltz, Rev. S. S., D. D.	21
Ward, A. H.	27
Ward, E. C.	54

## W

	PAGE.
Warden, L. J.	170
Warden, H. P.	115
Warren, Rev. Edward L., D. D.	23
Waters, Laurence B.	60
Watthen, J. A.	206
Watthen, J. B., Jr.	206
Watthen, R. N.	140
Watthen, Thomas J.	204
Watterson, Henry	110
Watts, Benjamin B.	163
Watts, J. Richard	74
Watts, W. W.	26
Weaver, Rev. Jos. M., D. D.	31
Weher, Rev. John L., D. Litt.	114
Wedekemper, Howard C.	129
Weir, James	19
Westermann, Rev. Bernard H.	222
Weinstein, Edward F.	199
Whallen, John H.	143
Whayne, Trevor H.	165
Wheat, John L.	46
White, J. D.	80
White, John D.	115
White, J. Frank	139
White, John M.	227
Whitesides, Harry R.	203
Whitesides, Isaac F.	203
Whitesides, W. S.	168
Whitley, Andrew G.	172
Whitney, Roland L.	59
Willite, Samuel M.	157
Williams, Charles V.	78
Williams, George W.	104
Williams, Luke P., M. D.	170
Williams, Roger D.	98
Williams, Thomas D., M. D.	96
Williams, C. V., M. D.	58
Willis, L. C.	70
Willson, Augustus E.	24
Wilson, Rev. Emmett L.	81
Wilson, Frank C., A. M., M. D.	218
Wilson, Garrett D.	157
Wilson, George H.	172
Wilson, Hardin	159
Wolters, Henry	137
Wilson, W. Shelby	92
Windell, J. T., M. D.	198
Winn, Martin J.	73
Winslow, H. M.	190
Wiseman, G. E.	127
Withers, James S.	134
Witherspoon, A. C.	121
Wolff, E. Carl	222
Wood, C. Frank	935
Wood, Charles V.	155
Wood, Harry L.	112
Wood, Henry Cleveland	66
Woolfolk, Leander C.	39
Wright, Edwin J.	42
Wright, J. Will	121
Wybrant, Frank E.	

## Y

Yager, Arthur, Ph. D.	36
Yeaman, James M.	71
Yeaman, Malcolm	71
Yonts, Laurence	77
Young, Bennett H.	65
Young, Frank O., M. D.	95
Young, Stuart R.	60

## Z

Zabler, Rt. Rev. Francis	19
Zarba, Allen H.	182
Zaring, I. W.	182
Zoll, Fred	158

# INDEX TO TOPICS.

## A

PAGE.

Abbotts	19
Acetylene Gas Machines	177
Adjutant Generals	59
Accident Insurance	149-159
Advertisement Writers	116
Advertising Agents	116
Agricultural Implements	124-165-166
Ammunition	180
A. O. U. W.	91
Architects	119
Art Goods	120
Artists	119
Attorney General	49
Attorneys, Commonwealth	55-56
Auditor, State of Kentucky	48-94
Authors	28-65-78-79-110-112-113-115-140-147-155
Automobile	217

## B

Bakeries	203
Bandmaster	118
Bands	118
Bank and Office Fixtures	177
Bankers	68-69-71-73-98-124 to 141-144-178-185-212-224
Baptist Clergymen	25-26-27-30-31
Baptist Theological Seminary	30
Basket Manufacturers	177
Bath Tubs	167
Berea College	36
Bishops	17
Blank Book Manufacturers	114-115
Boiler Manufacturers	169-170
Book Binders	114-115
Booksellers and Stationers	114-115
Boots and Shoes	185
Box Manufacturers	175
Brass Foundries	167
Breeders	225
Brewers	211-212-213
Brokers	123-151-152-153-218-219
Broom Manufacturers	177
Bryant & Stratton Business College	39
Builders	163
Building Material	160
Building Stone	180
Business Colleges	39
Butchers	219

## C

Caldwell College	33
Candy Manufacturers	178
Capitalists	123
Car Builders	163-179
Carpenters and Builders	160
Carpets, Oil Cloths, etc.	189-190
Carriage Manufacturers and Dealers	173-217
Casualty Insurance	150
Cement Manufacturers	165-191-228
Center College	31
Chewing Gum	178
Children's Home	52
Christian Church Clergy	27-28-33
Cigar Manufacturers	176-177
City Attorney	61
City Comptroller	59
City Court Clerks	59
City Hospital	39-89-103

## C

PAGE.

City Treasurer	60
Civil Engineer	155
Clearing House	219
Clergymen	17 to 33 inclusive; 35-104
Clothing Manufacturers and Retailers	171-172-181-191
Coal	130-195-217
Colleges	19-30-31-32-33-34-35
College of the Bible	32
Commercial Agency	123
Commercial Colleges	29
Commissioners	45-60-62
Commissioner of Agriculture (State)	49
Commission Merchants	214-218
Confectionery and Ice Cream	204
Congressmen	41-44-45-71-72-76
Contractors	155-162-163
Contractors and Builders	160-163-196
Coopers	175
Cotton Mills	181
Councilmen, Clerk of Board of	60
County Treasurer	60
Court Clerks	48-56-57
Credit Indemnity Co.	150
Custodian (U. S.)	62

## D

Deaconess' Hospital	89
Decorators	162
Dentists	105-106-107
Department Stores	187
Diamond Setter	184
Distillers	53-140-205 to 210 inclusive.
Distillers' Supplies	213
Drugs	42-109-192-193-194
Dry Goods	185-186-187-188-189-190
Dye Houses, Steam	185-197
Dynamite	180

## E

Editors	21-25-128-51-58-110-111-112-113-115-116
Electrical Fixtures and Supplies	155
Electricians	175
Electrotypes	161
Elevators, Grain	195
Elevator Manufacturers	165
Embalmers	220-221
Engineers, City	57-61
Engineers, Electrical	155
Engravers	161
Episcopal Clergymen	17-18
Evangelical Clergymen	20

## F

Farmers	45-57-130-132-133-137-138-139-140-221-222
Federal Officers	40 to 45 inclusive.
Feeble Minded Institute	52
Financial Agents and Brokers	123-151-152
Fire Insurance	146-147
Florists	223
Flour	133-191
Foundries, Iron	164-165-166-167-168-171
Furniture, Wholesale	196
Funeral Directors	139-216-217

## G

	PAGE.
Gardeners .....	226
Gas Machines .....	177
General Insurance .....	150
Georgetown College .....	31-36
Gethsemane College .....	19
Girls' High School .....	38
Gospel Mission .....	27
Governors .....	44-48-63
Grain .....	176-195
Grain Elevators .....	195
Grain and Mill Co. ....	182
Grocers, Wholesale and Retail .....	35-74-224-225-226

## H

Hamilton College .....	33
Harness Manufacturers .....	171
Hardware .....	168-192-193-224-225
Hats .....	191-194
Hazel Green Academy .....	36
Hebrew Clergymen .....	29
High School .....	37
Historians .....	112-115
Horticulturist .....	222
Hospital College of Medicine Faculty .....	81-82-84
Hotels .....	200-201-202
House Furnishings .....	174

## I

Ice Cream .....	204
Ice Manufacturers and Dealers .....	182-197
Indemnity Companies .....	150
Infirmaries .....	81-94
Insurance .....	145 to 150 inclusive.
Insurance Adjusters .....	146
Insurance Agents .....	145 to 150
Insurance Commissioner .....	50
Insurance Companies .....	145 to 150
Insurance Co., Casualty .....	150
Inventors .....	94-108-118-161-228
Iron, Steel, Nails, Wire, Pig Iron .....	167-168
Iron Pipe, Brass Goods .....	167

## J

Jeans Manufacturers .....	172
Jewelers .....	184-228
Jewelry Manufacturers .....	184
Judges Supreme Court of Appeals .....	46-47-63
Judges U. S. District Court .....	40
Judges .....	54-72

## K

Kentucky School of Medicine Faculty .....	87-88
Kentucky Insane Asylum .....	52
Kentucky University .....	32
Kentucky University Faculty .....	85-86

## L

Laundries .....	197
Law Books .....	114-115
Lawyers .....	40-41-44-45-48-50-53 to 58-61 to 80-131 to 139-149-150.
Leaf Tobacco Exchange .....	223

## L

	PAGE.
Leather .....	181
Legislature, Members of .....	53-57-62-77-79-101-162-222
Lexington Business College .....	39
Librarian, State .....	52
Lieut. Governor .....	48-63
Light and Power .....	182
Lime .....	165-191
Life Insurance .....	145-146-147-148-149-150
Livery and Sale Stables .....	217-218
Live Stock Dealer .....	134-214-218
Loan Agents .....	153
Louisville Medical College Faculty .....	67-89
Louisville Training School .....	37
Lumber .....	138-175-196-197
Lutheran Clergymen .....	21

## M

Machine Companies .....	58-169-170
Madison Institute .....	33
Mail Contractors .....	218
Marble Works and Dealers .....	180
Manufacturers .....	138-161-164 to 183 inclusive.
Mayors .....	58-116
Meats .....	214-215
Medicines .....	183
Merchants .....	53-116-130-131-133-138-139-155-164-174-183 to 199-224-228.
Merchant Tailors .....	198
Methodist Episcopal Clergymen .....	17-29
Mill and Supply Co. ....	179
Millinery .....	189
Monuments .....	180
Musical Instrument Dealers .....	118-119
Music Teachers .....	117-118

## N

Newspapers and Periodicals, 110-111-112-113-114-115-116	
Nurserymen .....	227

## O

Office Fixtures .....	177
Office Supplies .....	114-115
Ogden College .....	33-61
Oils .....	179-183
Opticians .....	108-228
Organists .....	117-118
Osteopathic Physicians .....	104
Ox Breeches .....	181

## P

Packers .....	214
Packet Companies .....	156-157-158
Painters and Painters' Supplies .....	162
Paints, Oils and Glass .....	162-179-183-218
Parasols .....	190
Penitentiary .....	57
Pharmacists .....	109
Phonographs and Supplies .....	122
Photo Engravers .....	161
Photographers .....	120-121-122
Physicians and Surgeons .....	59-81 to 104 inclusive.
Pianos, Organs, etc. ....	118-203
Pickles .....	178
Pig Iron, Steel, etc. ....	168
Pipe Fittings .....	167
Planing Mills .....	175-196-197

## P

	PAGE.
Plasterers .....	163
Plow Manufacturers .....	165-166
Plumbers .....	163
Poet .....	112
Postmasters .....	40-42
Potter College .....	35
Presbyterian Clergymen .....	22-23-24
Presbyterian Theological Seminary .....	22-24
Preserves .....	178
Principals .....	38
Printers .....	114
Printers' Material .....	161
Prison Commissioner .....	51
Produce, Wholesale and Commission .....	226-227
Proprietary Medicines .....	183
Publishers .....	110-111-112-113-114-115-116

## R

Rabbis .....	29
Railroad Attorneys .....	64-69-73
Railroad Commissioner .....	50
Railroads and Steamboats .....	129-156-157-158
Real Estate Counselor .....	80
Real Estate Agents and Brokers .....	80-151-152-153-154
Receiver of Taxes .....	59
Refining Company .....	179
Restaurants .....	200-204
Roman Catholic Clergymen .....	17-19-20-21

## S

Saddlery .....	174
Salt .....	191
Sanitary Engineers .....	155-163
Sanatoriums .....	81-94
Sash Doors and Blinds .....	175-196-197
Savings Banks .....	45-144
Saw Mills .....	175
Saws, Wheels, Machines .....	170
Schools .....	36-37-38-39
School of Reform .....	37
Secretaries .....	48-51-59
Seed Stores and Growers .....	124-222
Seminaries .....	22-24-30
Senators, State .....	53-71
Senators, U. S. ....	44
Shoes .....	185-191-194
Sick Insurance .....	149
Soap Manufacturers .....	179
Southwestern Homeopathic College .....	90-91
Southern Normal School .....	39
Spanish American War Veterans .....	43
Specialists .....	168
State College .....	34-35
State, City and County Officials, 48 to 57 Inclusive, .....	49
State Treasurer .....	167-168
Stationers .....	114-115
Steel .....	167-168
Steamboats .....	156-157-158
Stone Works .....	180
Storage .....	154
Stores, Grates, etc.....	164

## S

	PAGE.
Stock Yards .....	214
Superintendent City Schools .....	38
Superintendent Public Instruction, State.....	49
Supreme Court Judges .....	46-47
Supreme Court Clerk .....	47
Surety Companies .....	150
Surgical Instruments .....	184

## T

Tailors and Tailors' Trimmings.....	198
Tanners .....	181
Theater Managers .....	199
Theological Seminaries .....	22-30
Title Companies .....	144
Tobacco Buyer .....	221
Tobacco Exporter .....	129
Tobacco Manufacturers, etc.....	176-219-220
Tobacco Warehouses .....	219-220
Towels .....	197
Training School .....	196-197
Trust Companies .....	69-130-142-143-144
Typewriters .....	114-115
Turfman .....	221

## U

Umbrellas .....	190
Unitarian Clergymen .....	24
University of Louisville, Faculty of.....	83-90-91-92-93
University School .....	37
U. S. Attorney .....	40
U. S. Collector Internal Revenue .....	41-113
U. S. Judges .....	40-46-47-113
U. S. Pension Clerk .....	42
U. S. Surveyor of Customs .....	41
U. S. Weather Bureau .....	43

## V

Vanderbilt Training School .....	36
Varnishes .....	183
Veterinary Surgeons .....	108-109

## W

Wagons, Carriages .....	173-185
Wall Paper .....	162
Warehouses, Tobacco .....	219-220
Warden Penitentiary .....	51
Watch Inspector .....	298
Water Works .....	155-154
Wesleyan College .....	31
Wheels .....	170
Whisky and Liquors .....	213 to 214
Wines and Whiskies, Wholesale and Retail.....	210
Woollen Mills .....	172-193-185

## BISHOPS.



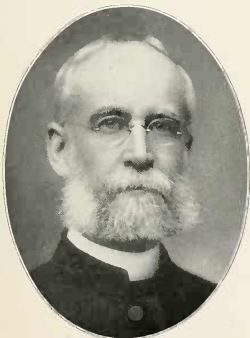
RT. REV. THOS. UNDERWOOD DUDLEY, D. D.  
LL. D.

Episcopal Bishop (1875) of the Diocese of Kentucky, organized 1829, Louisville, Ky.



RT. REV. WILLIAM GEORGE McCLOSKEY,  
D. D.

Roman Catholic Bishop (consecrated May 24, 1868) of the Diocese of Louisville. Established at Bardstown, April 8, 1808. Transferred to Louisville, Ky., 1841.



RT. REV. LEWIS WILLIAM BURTON, D. D.

Episcopal Bishop (1896) of the Diocese of Lexington, Ky., organized 1895, Lexington, Ky.



REV. HENRY CLAY MORRISON, D. D.

Bishop of the Methodist Episcopal Church, South, Louisville, Ky.

## CLERGYMEN.



REV. CHARLES EWELL CRAIK, D. D.  
Dean Christ Church Cathedral, Protestant  
Episcopal, Louisville, Ky.



REV. GEORGE GRANT SMITH.  
Assistant Rector Christ Church Cathedral,  
Protestant Episcopal, and Secretary  
of the Council, Louisville,  
Ky.



REV. EDMUND T. PERKINS, D. D.\*  
Rector Emeritus St. Paul's Protestant  
Episcopal Church, Louisville.



REV. REVERDY ESTILL, D. D.  
Rector St. Paul's Protestant Episcopal  
Church, Louisville, Ky.

\*Died July 6, 1901.

## CLERGYMEN.



RT. REV. EDMUND M. OBRECHT, O. C. R.  
 Abbot of Gethsemane and President of  
 Gethsemane College, Gethsemane,  
 Ky.



RT. REV. MONSIGNOR FRANCIS ZABLER.  
 Pastor St. Martin's (German) Roman  
 Catholic Church, Louisville, Ky.



REV. BERNARD H. WESTERMANN.  
 Pastor Church of the Immaculate  
 Conception, Roman Catholic,  
 Louisville, Ky.



REV. CHARLES P. RAFFO.  
 Pastor St. Charles Borromeo Roman Catholic  
 Church, Louisville, Ky.



## CLERGYMEN.



REV. EDWARD SHIELDS FITZGERALD.  
Pastor St. Paul's Roman Catholic Church,  
Owensboro, Ky.



VERY REV. LAWRENCE BAX.  
Pastor St. John's Roman Catholic Church,  
Louisville, Ky.



VERY REV. W. D. FICKEL.  
Pastor St. Peter's and St. Paul's Roman Catholic  
Church, Danville, Ky.



VERY REV. JOSEPH A. HOGARTY.  
Pastor St. Augustine's Roman Catholic  
Church, Lebanon, Ky.

## CLERGYMEN.



REV. OSCAR P. ACKERMAN, D. C. L.  
 Pastor St. Philip Nerl's Roman  
 Catholic Church, Louisville, Ky.



REV. S. S. WALTZ, D. D.,  
 Pastor First English Lutheran Church,  
 Louisville, Ky.



REV. LOUIS G. NOLLAU.  
 Pastor St. Paul's Evangelical Church,  
 Louisville, Ky.



REV. HARLAN K. FENNER, D. D.  
 Pastor Second English Lutheran Church; A. M.  
 and D. D., Wettenberg College, Spring-  
 field, O.; Editor and Publisher Monthly  
 Sunbeam, Louisville, Ky.

## CLERGYMEN.



REV. CHARLES R. HEMPHILL, D. D.  
Professor Presbyterian Theological Seminary of  
Kentucky; for 14 years Pastor Second  
Presbyterian Church, Louisville, Ky.



REV. THOMPSON M. HAWES, D. D.  
Pastor Highland Presbyterian Church and Pro-  
fessor of Elocution, Presbyterian Theo-  
logical Seminary of Kentucky,  
Louisville, Ky.



REV. T. A. BRACKEN, D. D.  
Over Thirty Years Pastor Second Presby-  
terian Church, Lebanon, Ky.



REV. THOMAS CUMMINS, D. D.  
Pastor First Presbyterian Church, Hen-  
derson, Ky.

<http://stores.ebay.com/Ancestry-Found>

CLERGYMEN



REV. HENRY H. SWEETS.  
Pastor James Lee's Memorial Presbyterian  
Church, Louisville, Ky.



REV. EDWARD L. WARREN, D. D.  
Pastor Immanuel Presbyterian Church; Stated  
Clerk of the Presbyterian (Northern) Synod  
of Kentucky, Louisville, Ky.



REV. J. OVERTON REAVIS.  
Supplying Pulpit First Presbyterian Church,  
Louisville, Ky.



REV. W. S. DANLEY, D. D.  
Pastor Cumberland Presbyterian Church;  
President Kentucky Christian En-  
deavor Union; Former Moder-  
ator General Assembly,  
Owensboro, Ky.

## CLERGYMEN.



REV. PEYTON HARRISON HOGE, D. D.  
 Pastor Warren Memorial Presbyterian  
 Church, Louisville, Ky.



REV. LESLIE H. HUDSON, D. D.  
 Pastor First Presbyterian Church, Owens-  
 boro, Ky.



REV. EMMITT L. WILSON.  
 Davidson College B. A.; Louisville Semi-  
 nary B. D.; Pastor Third Presbyter-  
 ian Church, Louisville, Ky.



REV. FRED V. HAWLEY, D. D.  
 Pastor Church of the Messiah; Secretary South-  
 ern Unitarian Conference, and State Sec-  
 retary American Unitarian Associa-  
 tion, Louisville, Ky.

## CLERGYMEN.



REV. THOMAS T. EATON, D. D.  
Pastor Walnut Street Baptist Church;  
Editor Western Recorder, Louis-  
ville, Ky.



REV. CARTER HELM JONES, D. D.  
Pastor Broadway Baptist Church,  
Louisville, Ky.



REV. A. C. GRAVES, D. D.  
Pastor Baptist Church, Lebanon, Ky.



REV. FREDERICK DOUGLAS HALE, D. D.  
Pastor Third Baptist Church, Owens-  
boro, Ky.

## CLERGYMEN.



REV. JOS. M. WEAVER, D. D.  
 Pastor Chestnut Street Baptist Church;  
 Chairman State Board General Association  
 of Kentucky, Louisville, Ky.



REV. WILLIAM WISTAR HAMILTON.  
 Pastor McFerran Memorial Baptist Church; Spec-  
 ially successful in Evangelistic work.  
 Louisville, Ky.



REV. W. K. PENROD, D. D.  
 Pastor First Baptist Church, Paducah, Ky.



REV. BOURBON A. DAWES, D. D.  
 Pastor Highland Baptist Church, Louisville, Ky.



## CLERGYMEN.



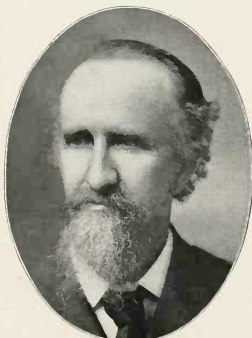
REV. E. PENDLETON JONES, D. D.  
 Pastor First Baptist Church, Owens-  
 boro, Ky.



REV. JOSEPH S. FELIX.  
 Pastor East Baptist Church, Louisville, Ky.



REV. STEVE P. HOLCOMB.  
 Superintendent Union Gospel Mission,  
 Louisville, Ky.



J. H. BAKER.  
 Minister of the Christian Church. Born in  
 Clark County, where he lived the  
 greater part of his life; the past  
 twelve years a resident  
 of Lexington, Ky.

## CLERGYMEN.



REV. EDWARD L. POWELL, D. D.  
Pastor First Christian Church, Louisville, Ky.



REV. I. J. SPENCER, D. D.  
Pastor Central Christian Church, Lexington, Ky.



REV. MARK COLLIS, D. D.  
Pastor Broadway Christian Church,  
Lexington, Ky.



REV. JOHN T. BROWN.  
Editor Christian Guide; Author of "Bruce Nor-  
man" and "Encyclopedia of Churches of  
Christ at the Beginning of the Twentieth  
Century," Louisville, Ky.

## CLERGYMEN.



REV. WILLIAM F. LLOYD, D. D.  
Pastor Walnut M. E. Church  
(South), Louisville, Ky.



REV. DANIEL S. CAMPBELL, D. D.  
Joined Louisville Conference 1863; Member General Conference St. Louis 1890, and Baltimore 1898; Presiding Elder (15 years) Elizabethtown District; Reserve Delegate, Dallas, Texas, May, 1902, Russellville, Ky.



REV. ADOLPH MOSES, D. D.\*  
Rabbi Temple Adath Israel, Louisville, Ky.  
\*Died January 2, 1902.



REV. H. G. ENELOW, D. D.  
Rabbi Temple Adath Israel, Louisville, Ky.

## THEOLOGIANS AND EDUCATORS.

SOUTHERN BAPTIST THEOLOGICAL SEMINARY.



REV. EDGAR Y. MULLINS, D. D., LL. D.  
President and Professor of Theology Southern  
Baptist Theological Seminary, Louis-  
ville, Ky.



REV. EDWIN C. DARGAN, D. D.  
Professor of Homiletics and Ecclesiology South-  
ern Baptist Theological Seminary,  
Louisville, Ky.



REV. JOHN R. SAMPEY, D. D.  
Professor Old Testament and Librarian South-  
ern Baptist Theological Seminary  
Louisville, Ky.



REV. GEORGE B. EAGER, D. D.  
Professor of Biblical Introduction and Associate  
Professor of Practical Theology, Southern  
Baptist Theological Seminary, Louis-  
ville, Ky.

## THEOLOGIANS AND EDUCATORS.



REV. WM. CHARLES ROBERTS,  
D. D., LL. D., S. T. D.,  
Ex-President Lake Forest University, Ill; Ex-  
Moderator Presbyterian General Assembly;  
Ex-Secretary Presbyterian Board;  
President Center College, Dan-  
ville, Ky.



REV. L. M. BLANTON, D. D.  
Vice-President Center College, Danville, Ky.



REV. JOHN L. WEBER, D. Litt.  
President Kentucky Wesleyan College;  
Elder M. E. Church, South; Former  
Pastor in Virginia and Tennes-  
see, Winchester, Ky.



REV. B. D. GRAY, A. M., D. D.  
President Georgetown College; Graduated Mis-  
sissippi College, Clinton Miss.; Graduate South-  
ern Baptist Theological Seminary, Louis-  
ville; Pastor First Baptist Church,  
Birmingham, Ala., 1893-1901, George-  
town, Ky.

## THEOLOGIANS AND EDUCATORS.

KENTUCKY UNIVERSITY.



REV. J. W. MCGARVEY,  
President College of the Bible (Christian) Ken-  
tucky University, Lexington, Ky.



REV. BURRIS A. JENKINS.  
President Kentucky University (Christian)  
Lexington, Ky.



ALEXANDER R. MILLIGAN.  
Acting President (1901); Professor of Latin  
Kentucky University (Christian),  
Lexington, Ky.



REV. ISAIAH B. GRUBBS.  
Minister 50 years, professor 25 years; Pro-  
fessor College of the Bible Kentucky  
University (Christian), Lexing-  
ton, Ky.

## EDUCATORS.



REV. J. W. MCGARVEY, JR., A. M.  
President Madison Institute, a High Class Board-  
ing School for Young Ladies, Rich-  
mond, Ky.



B. C. HAGERMAN, A. M.  
Former President of Bethany College, W. Va.;  
President Hamilton College for Young  
Ladies, Lexington, Ky.



MAJOR W. A. OBENCHAIN, A. M.  
Teacher and Writer; Born in Buchanan, Va.;  
Served with Distinction as Captain of Engi-  
neers under General Robert E. Lee, Army  
of Northern Virginia; President of Og-  
den College, Bowling Green, Ky.



REV. J. CALVIN ELY, D. D.  
President Caldwell College for Young Ladies;  
Former Synodical Evangelist, Synod of  
Texas, and Former Moderator, Synod  
of Kentucky, Danville, Ky.

## EDUCATORS.

STATE COLLEGE.



PROF. JAMES K. PATTERSON, PH. D., LL. D.

Fellow Royal Historical Society, Great Britain; Fellow Society of Antiquarians, Scotland; President State College of Kentucky since 1869, Lexington, Ky.



PROF. M. A. SCOVELL.

Director and Chemist Kentucky Agricultural Experiment Station, State College, Lexington, Ky.



PROF. HARRISON GARMAN.

Naturalist, Entomologist and Botanist Kentucky Experiment Station, and State Entomologist, State College, Lexington, Ky.



PROF. J. O. LABACH.

Chemist Pure Food Division Kentucky Agricultural Experiment Station, State College, Lexington, Ky.



## EDUCATORS.

STATE COLLEGE



PROF. ALFRED M. PETER.  
Chemist Kentucky Agricultural Experiment Station,  
State College, Lexington, Ky.



F. PAUL ANDERSON.  
Dean of School of Mechanical and Electrical Engineering,  
State College, Lexington, Ky.



REV. B. F. CABELL.  
President Potter College, Bowling Green, Ky.



JOHN M. CABELL.  
Cabell, Basse & Co., Wholesale Grocers,  
Louisville, Ky.

## EDUCATORS.



ARTHUR YAGER, PH. D.  
Professor of History and Political Science, Georgetown College, and for three years Acting President of College, Georgetown, Ky.



REV. WILLIAM GOODELL FROST, D. D.,  
PH. D.  
President Berea College; native of New York; a foremost advocate and champion of education for the people of the Southern mountains, Berea, Ky.



WILLIAM HENRY PRITCHETT, A. M.  
Former President N. W. Missouri College, Albany, Mo., and of J. M. A. College, Tullahoma, Tenn., and of Logan Female College, Russellville, Ky.; now Headmaster Vanderbilt Training School, Smith's Grove, Ky.



WILLIAM H. CORD.  
Principal Hazel Green Academy, the Kentucky Mountain Mission of the Christian Woman's Board of Missions, with headquarters at Indianapolis, Ind., Hazel Green, Ky.

EDUCATORS.



WILLIAM H. THARP.  
Head Master University School, Louisville, Ky.



PROF. H. K. TAYLOR.  
Principal Louisville Training School for Boys,  
Beechmont, Ky.



GEORGE CRUTCHER DOWNING.  
Principal of High School, Frankfort, Ky.



PETER CALDWELL.  
Superintendent Industrial School of Reform;  
thirty-six years' continuous service,  
Louisville, Ky.

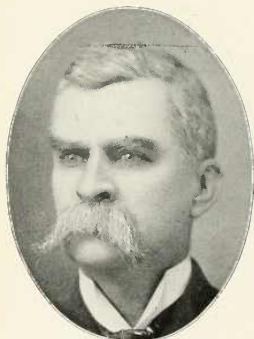
## EDUCATORS.



PROF. WM. H. BARTHOLOMEW.  
Principal Girls' High School,  
Louisville, Ky.



S. L. FROGGE, A. B., A. M.  
Ex-Principal Lafayette High School; Ex-County  
Superintendent Christian County; Ex-Sup-  
erintendent Benton Schools of Union-  
town, and of Middlesboro Schools;  
now Superintendent City Schools  
Frankfort, Ky.



WILLIAM C. GRINSTEAD.  
Principal Public Schools, Danville, Ky.



R. L. GARRISON.  
Principal Graded Schools, elected 1875, George-  
town, Ky.

EDUCATORS.

BUSINESS COLLEGES.



H. H. CHERRY.

General Manager Southern Normal School, Bowling Green Business College, The National School of Telegraphy, Civil Service, Railroad and Express, Bowling Green, Ky.



T. C. CHERRY.

Superintendent Courses of Study Southern Normal School and Teacher of Psychology and Literature, Bowling Green, Ky.



EDWIN J. WRIGHT.

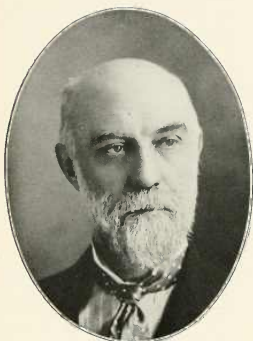
President Bryant & Stratton Business College; over thirty-five years in school work; introducer of business practice in commercial colleges in Kentucky, Louisville, Ky.



BENJAMIN B. JONES.

Age, thirty-five; for fifteen years a teacher of the commercial branches; President Lexington Business College, Lexington, Ky.

## FEDERAL OFFICIALS.



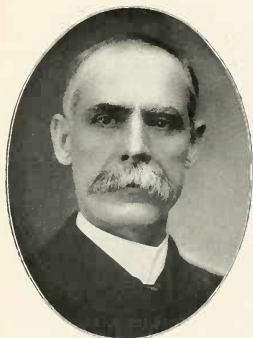
WALTER EVANS.

Judge United States Court, Western District of  
Kentucky; Former Member of Congress,  
Louisville, Ky.



ANDREW M. J. COCHRAN.

Judge United States Court, Eastern District of  
Kentucky, Maysville, Ky.



REUBEN D. HILL.

United States Attorney Western District of Ken-  
tucky, Louisville, Ky.



THOMAS H. BAKER, M. D.

Postmaster, Louisville, Ky.

FEDERAL OFFICIALS.



CHARLES E. SAPP.

U. S. Collector Int. Rev. Fifth Dist., Aug., 1897, to Nov., 1901; Ch'zman Rep. Co. Ex. Com. Jeff. Co.; Del. to Rep. Nat. Conv. of 1896 and 1900; Gen. Agt. Security Mut. Life Ins. Co., Louisville, Ky.



JOSEPH A. CRAFT.

Lawyer.  
United States Collector of Internal Revenue, Fifth District, Louisville, Ky.



E. T. FRANKS.

Lawyer; United States Collector of Internal Revenue Second District; Former Member of Congress, Owensboro, Ky.



CICERO M. BARNETT.

United States Surveyor of Customs; Chairman Republican State Central Committee, Louisville, Ky.

## FEDERAL OFFICIALS.

**J. WILL WRIGHT.**

Former Colonel Staff of Gov. W. O. Bradley; Former Chairman Republican Campaign Committee; Former Councilman; Postmaster, Bowling Green, Ky.

**WILLIAM P. McDOWELL.\***

Maj. and Asst. Adj. Gen. under Maj.-Gen. L. H. Rousseau, Army of the Cumberland, Civil War, 1861-1865; Clerk U. S. Pension Office, Louisville, Ky.

\*Died January 31, 1902.

**SAMUEL B. HOLMES.**

Druggist.  
Postmaster 1894-1901, Frankfort, Ky.

**C. O. REYNOLDS.**

Dep. Collector Int. Rev. Seventh Dist.; last Register of Land Office of Ky., and first Republican ever elected to that position; descendant of Aaron Reynolds of Revolutionary fame, Lexington, Ky.



## FEDERAL OFFICERS AND SPANISH-AMERICAN WAR VETERANS.



MAJ. HENRY B. HERSEY.

Director United States Weather Bureau; Adjutant-General of New Mexico; Major, Roosevelt's Rough Riders, Spanish-American War, Louisville, Ky.



ISADORE L. SHULHAFFER.

Clerk Postoffice; First Lieut. Co. "M," First Ky. Regt. U. S. V. Inf., Spanish-Amer. War; Com. Frank C. McComb Camp No. 13, Spanish-American War Veterans, Louisville, Ky.



CAPT. F. R. DE FUNIAK, JR.

First Lieut. Twenty-ninth Infantry U. S. A.; Second Lieut. Eleventh Infantry, U. S. A.; Capt. Co. "M," First Ky. Regt., U. S. V. Infantry, Spanish-American War, Louisville, Ky.



CAPT. PAUL C. GALLEHER.

First Lieut. Twenty-ninth Infantry U. S. A.; Capt. First Ky. Regt. U. S. V. Infantry, Spanish-Amer. War; Capt. Thirty-first U. S. Vol. Infantry, Philippine Insurrection, Louisville, Ky.

## U. S. SENATORS.



WILLIAM J. DEBOE.

United States Senator; term expires 1903, Marion, Ky.



JOSEPH C. S. BLACKBURN.

United States Senator; term expires 1907, Versailles, Ky.



JAMES B. MCCREARY.

Lawyer; Gov. of Ky. 1875-79; Member of Congress 12 yrs.; Legislature, 6 yrs.; Speaker of House, 4 yrs.; Member International Monetary Congress from U. S., held at Brussels, 1892; Lieut. Col. C. S. A.; U. S. Senator-elect 1902, Richmond, Ky.



WILLIAM LINDSAY.

Lawyer, Jurist and Statesman; Member United States Senate, 1896-1901, Frankfort, Ky.

## CONGRESSMEN.



HARVEY S. IRWIN.

Secretary and General Manager Home & Savings  
Fund Co.; Member of Fifty-seventh Congress,  
Representing Fifth District, Louisville,  
Ky.



SOUTH TRIMBLE.

Farmer; Represented Franklin County in Legisla-  
ture two sessions; Speaker of the House  
during the Goebel-Taylor gubernatorial  
contest; Member Fifty-seventh Con-  
gress, representing Seventh Dis-  
trict, Frankfort, Ky.



GEORGE G. GILBERT.

Lawyer; firm of Gilbert, Peak & Gilbert; Mem-  
ber of Fifty-seventh Congress, represent-  
ing Eighth District, Shelbyville, Ky.

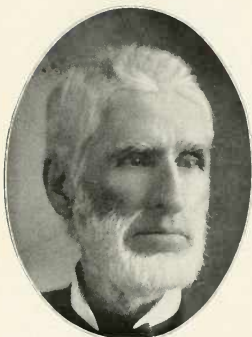


JAMES N. KEHOE.

Lawyer; Former City Attorney; Master Com.  
Mason Circuit Court; Member Fifty-seventh  
Congress, representing Ninth District,  
Maysville, Ky.

## STATE, COUNTY AND CITY OFFICIALS.

## SUPREME COURT OF APPEALS.



B. L. D. GUFFY.

Justice Court of Appeals from Second District;  
Chief Justice 1902.



THOMAS H. PAYNTER.

Justice Court of Appeals from Sixth District;  
Chief Justice 1901.



J. D. WHITE.

Justice Court of Appeals from First District.



J. P. HOBSON.

Justice Court of Appeals from Third District.

## STATE, COUNTY AND CITY OFFICIALS.

## SUPREME COURT OF APPEALS.



GEORGE DuRELLE.

Justice Court of Appeals from Fourth District.



A. R. BURNAM.

Justice Court of Appeals from Fifth District.



E. C. O'REAR.

Justice Court of Appeals from Seventh District.



SAMUEL J. SHACKELFORD.

Clerk Court of Appeals; Sheriff Hopkins County  
for four years; Sergeant-at-Arms Ky. Senate  
1892-1893; Tax Collector Daviess County  
four years, Frankfort, Ky.

## STATE OFFICIALS.



J. C. W. BECKHAM.

Lawyer; Governor of the State; Frankfort, Ky.



LILLARD CARTER.

Lawyer; Member of Ky. Senate 1898; President of Senate, Feb., 1900; Acting Lieut. Gov. from the death of Gov. Goebel until Jan., 1902, Lawrenceburg, Ky.



C. B. HILL.

Secretary of State, Frankfort, Ky.



GUS G. COULTER.

Former Clerk Graves County Circuit Court, 1886-92; State Auditor, Frankfort, Ky.

## STATE OFFICIALS.



S. W. HAGER.  
State Treasurer, Frankfort, Ky.



ROBERT J. BRECKINRIDGE.  
Attorney-General, Frankfort, Ky.



ION BEVERLY NALL.  
Formerly Editor of Farmers' Home Journal; Sec-  
retary American Saddle Horse Assn.; State  
Commissioner of Agriculture, Louis-  
ville, Ky.



H. V. MCCHESNEY.  
Superintendent Public Instruction, Frankfort, Ky.

## STATE OFFICIALS.



DAVID R. MURRAY.

Lawyer; Adjutant-General; Adjutant Seventeenth Ky. Vol. Cav. U. S. A. Civil War; State Senator 1877-1881; Lieut.-Col. Fourth Ky. Vol. Inf. U. S. A. Spanish-Amer. War, Frankfort, Ky.



PERCY HALEY.

Assistant Adjutant General; Secretary Democratic State Central and Executive Committee, Frankfort, Ky.



C. C. McCHORD.

Lawyer; County Attorney 1886-1892; Railroad Commissioner; Chairman of Board 1892-95; State Senator 1895-99; Author of McChord R. R. Bill; R. R. Commissioner and Chairman of Board from 1899, Springfield, Ky.



JOHN B. CHENAULT.

Former Vice President State Bank & Trust Co. of Richmond; now Insurance Commissioner, Frankfort, Ky.



## STATE OFFICIALS.



EDWARD FENNELL.

Chairman of Board of Prison Commissioners,  
Cynthiana, Ky.



E. T. LILLARD.

Warden Kentucky Penitentiary; was walking with  
Gov. Goebel at the time the latter was as-  
sassinated, Frankfort, Ky.



LEW G. WALLACE.

Minister and Editor; Chaplain Kentucky State  
Prison; Police Judge Lexington, Ky., 1887-  
1888; Principal Graded Schools 1888-89;  
joined Ky. Conference M. E. Church  
South, 1890; Gen. Agt. Union Cent.  
Life Ins. Co., Louisville, Ky.



ED. O. LEIGH.

Private Secretary to Governor J. C. W. Beckham.  
Frankfort, Ky.

## STATE OFFICIALS.



CLEON C. OWENS.

Superintendent Kentucky Feeble Minded Institute,  
Frankfort, Ky.



WM. WADE RAY, M. D.

Supt. West. Ky. Insane Asylum; Member State  
Med. Soc.; Member Miss. Val. Med. Soc.  
Former Member Board of Pension Ex-  
aminers, Hopkinsville, Ky.



GEORGE L. SEHON.

State Superintendent Kentucky Children's Home  
Society; Dir. Nat. Children's Home  
Society, Louisville, Ky.



FRANK K. KAVANAUGH.

Assistant State Librarian, Frankfort, Ky.

STATE OFFICIALS.



E. H. TAYLOR, JR.  
Merchant; State Senator representing Twentieth District; Senior Member of E. H. Taylor, Jr. & Co., Distillers; Former Mayor Frankfort, Ky.



J. CAMPBELL CANTRILL.  
Lawyer; State Senator representing Twenty-second District, Georgetown, Ky.



GEORGE W. HICKMAN.  
Lawyer; State Senator, representing Eighth District; Member Ky. House of Representatives 1887-1901; Chairman Goebel-Taylor gubernatorial contest Board, 1906, Calhoun, Ky.



STEPHEN A. DOUGLAS RIGDON.  
Lawyer and Merchant; Member of the Legislature, House of Representatives, representing Bracken County, Germantown, Ky.

## STATE, COUNTY AND CITY OFFICIALS.



SHACKELFORD MILLER.

Lawyer; Judge Chancery Division Jefferson Circuit Court, Louisville, Ky.



HANSON KENNEDY.

Lawyer; Member Constitutional Convention of 1890; Circuit Court Judge Eighteenth Judicial District, Carlisle, Ky.



WILLIAM B. HOKE.

Lawyer; Judge of Jefferson County Court for twenty-eight consecutive years, Louisville, Ky.



E. C. WARD.

Lawyer; Judge Henderson County, Henderson, Ky.

## STATE, COUNTY AND CITY OFFICIALS.



JOHN R. ALLEN.

Bronston & Allen, Lawyers; Commonwealth Attorney Twenty-second Circuit Court, Judicial District, Lexington, Ky.



ROBERT B. FRANKLIN.

Lawyer; Commonwealth Attorney Fourteenth Circuit Court Judicial District, Frankfort, Ky.



FRANK PARSONS.\*

Lawyer; Commonwealth Attorney Thirtieth Circuit Court Judicial District, Louisville, Ky.

\*Died 1901.



DUDLEY A. GLENN.

Lawyer; Commonwealth Attorney Sixteenth Circuit Court Judicial District, Covington, Ky.

## STATE, COUNTY AND CITY OFFICIALS.



R. F. PEAK.

Lawyer; Commonwealth Attorney Twelfth Circuit Court Judicial District, Shelbyville, Ky.



J. M. COOPER.

Sheriff Mariou County; County Judge, elected 1901; age thirty-eight, Lebanon, Ky.



THOMAS E. GREENE.

Circuit Court Clerk Taylor County; has been Circuit Clerk for over twenty-five years, Campbellsville, Ky.



GEORGE C. MOORE.

Lawyer; Circuit Court Clerk Jackson County; Master Commissioner; Chairman Republican County Committee; age twenty-two, McKee, Ky.

## STATE, COUNTY AND CITY OFFICIALS.



JACKSON MORRIS.

Represents Seventy-first Legislative District (Clay, Jackson and Owsley Counties) Kentucky House of Representatives, Annville, Ky.



SOLOMON LEE VAN METER.

Farmer and Stock Raiser; represents Sixty-first Legislative District; President Union Stock Yards; Bank Director; Curator Ky. University, Lexington, Ky.



A. P. CARTER.

Clerk Marion County Court, Lebanon, Ky.



CHARLES C. ROE.

Assistant City Engineer; former Chief Deputy County Assessor, Louisville, Ky.

## CITY AND COUNTY OFFICIALS.

## MAYORS.



CHARLES F. GRAINGER.

Mayor of the City of Louisville; President and  
Manager Phoenix Foundry & Machine Co.  
(Grainger & Co.) Louisville, Ky.



HENRY T. DUNCAN.

Editor Daily Press 1871-1893; Mayor 1893-1896 and  
1900-1904, Lexington, Ky.



L. C. WILLIS.

Lawyer; Mayor of the City of Shelbyville, Ky.



J. B. FISHER.

Mayor of the City of Lebanon, Ky.



CITY AND COUNTY OFFICIALS.



SAMUEL M. WILHITE.  
Accountant, City Comptroller, Louisville, Ky.



JAMES B. BROWN.  
Receiver of Taxes, Louisville, Ky.



THOMAS P. CRAIG.  
Secretary to Mayor Grainger; Former Secretary  
Board of Public Works, Louisville, Ky.



ELLIS DUNCAN.  
Physician; Superintendent City Hospital; Capt.  
and Asst. Surgeon First Ky. Inf. U. S.  
Vol. Span. Amer. War, Louisville, Ky.

## CITY AND COUNTY OFFICIALS.



STUART R. YOUNG.\*

City Treasurer, Louisville, Ky.

\*Died 1901.



LAURENCE B. WATERS.

County Treasurer; has been Treasurer of Jefferson County in continuous service for fifteen years, Louisville, Ky.



ROBERT W. HERR.

Commissioner Jefferson Circuit Court, St. Matthews, Ky.



SAMUEL F. HARLAN.

Clerk of the Board of Councilmen 1900-1901, Louisville, Ky.

CITY AND COUNTY OFFICIALS.



JOSEPH G. COVINGTON.

Lawyer; President Board of Trustees, Ogden College; Sec. Board of Directors, Citizens' Nat. Bank; City Attorney, Bowling Green, Ky.



W. NICK VAUGHAN.

Lawyer; Prosecuting Attorney 1901, Louisville, Ky.



T. HITER CROCKETT.  
City Attorney, Frankfort, Ky.



CLARENCE W. PARSONS.  
Chief City Engineer, Louisville, Ky.

Digitized by Microfilm

## CITY AND COUNTY OFFICIALS.



HARRY STUCKY.

Former Clerk City Court; Commissioner of Deeds,  
Louisville, Ky.



B. F. D. FITCH.

Paymaster U. S. S. Tennessee, 1862-63-64; Former  
Assistant Custodian U. S. Custom House  
and Postoffice Building, Louisville, Ky.

## LAWYERS.



R. T. COLSTON.

Lawyer; Captain First Kentucky Regiment U. S.  
V. Infantry, Spanish-American War,  
Louisville, Ky.



CHARLES F. OGDEN.

Lawyer; Member Legislature 1898-1900; Capt. Co.  
H. Eighth Regt. U. S. V. Inf., Spanish-  
Amer. War; Candidate for County  
Atty. 1904, Louisville, Ky.

LAWYERS.



WILLIAM O. BRADLEY.

Lawyer; Governor of Kentucky 1895-99, Lancaster, Ky.



JOHN YOUNG BROWN.

Lawyer; Governor of Kentucky 1891-95, Louisville, Ky.



JAMES H. HAZELRIGG.

City Att'y Mt. Sterling, 1873-81; County Judge Montgomery Co., 1881-86; Judge Court of Appeals, 1892-1900; Chief Justice, 1892-1900, Frankfort, Ky.



JAMES W. BRYAN.

Lawyer; Lieutenant-Governor 1887-1891, Covington, Ky.

## LAWYERS.



W. C. P. BRECKINRIDGE.  
Breckinridge & Shelby, Lawyers, Lexington, Ky.



BASIL W. DUKE.  
Lawyer; Attorney L. & N. R. R., Louisville, Ky.

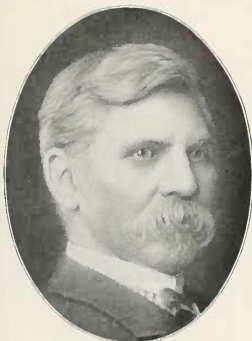


JAMES H. MULLIGAN.  
Lawyer; Former Judge; State Senator and U. S.  
Consul General to Samoa, Lexington, Ky.



O. S. TENNEY.  
Lawyer; Major C. S. A. Army, Lexington, Ky.

## LAWYERS.



BENNETT H. YOUNG.

Lawyer; Pres. Louisville Pub. Library, formerly Polytechnic Soc.; Pres. Ky. Inst. for Blind; Pres. Confed. Assn. of Ky.; Comdr. Geo. B. Eastin Camp U. C. V. A.; Adj. Gen. Ky. Div., U. C. V. A.; Mem. Va. Sou. Hist. Soc.; author of several works on Ky. History, Louisville, Ky.



REUBEN T. DURRETT, A. M., LL. D.

Lawyer (retired); Pres. Filson Club; Pres. Children's Free Hospital; Vice-Pres. Ky. Heating Co., and member of numerous historical societies in U. S. and Europe, Louisville, Ky.



LUCIUS P. LITTLE.

Lawyer; Former Circuit Judge Sixth District, Owensboro, Ky.



RICHARD H. CUNNINGHAM.

Lawyer, Henderson, Ky.

## LAWYERS.



JOSEPH T. O'NEAL.  
O'Neal & O'Neal, Lawyers, Louisville, Ky.



WILLIAM P. THORNE.  
Lawyer, Eminence, Ky.



RICHARD P. ERNST.  
Lawyer; Chairman Republican State Campaign  
Committee, Covington, Ky.



LEANDER C. WOOLFOLK.  
Lawyer; Att'y for Jefferson County, including City  
of Louisville, 1878 to 1895; organizer of  
banks and trust companies, Louis-  
ville, Ky.



LAWYERS.



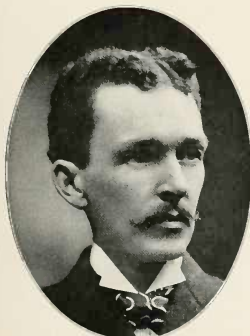
LYTTLETON COOKE.

Lawyer; Dist. Att'y L. & N. R. R.; Pres. Lou.  
Med. College; Member Pendennis Club,  
Louisville, Ky.



HORATIO W. BRUCE.

Lawyer; Chief Attorney L. & N. R. R.,  
Louisville, Ky.



CHARLES J. HELM.

Lawyer, Newport, Ky.



EDWARD J. McDERMOTT.

Lawyer, Louisville, Ky.

Digitized by Microfilm

## LAWYERS.



DANIEL W. LINDSEY.  
Lawyer.  
Frankfort, Ky.



JOHN K. HENDRICK.  
Lawyer; Former County Att'y; Former State Senator; Delegate from State at Large to Nat. Dem. State Conv., 1892; Member Fifty-fourth Congress, Paducah, Ky.



MONTGOMERY MERRITT.  
Lawyer; President of the Farmers' State Bank,  
Henderson, Ky.



GREEN R. KELLER.  
Lawyer.  
Carlisle, Ky.

LAWYERS.



JAMES S. PIRTLE.  
Of Pirtle & Trabue, Lawyers; Pres. University of  
Louisville; Vice-Pres. Col. Fin. & Trust  
Co., Louisville, Ky.



ATTILLA COX, JR.  
Member of firm of Pirtle & Trabue, Lawyers,  
Louisville, Ky.



CHARLES H. SHEILD.

Lawyer.  
Louisville, Ky.



J. MARSHALL CHATTERSON.

Lawyer; Pres. Louisville School Board; Former  
Pres. Young Men's Dem. Club, Louisville, Ky.

## LAWYERS.



SAMUEL AVRITT.  
Lawyer, Louisville, Ky.



CHARLES S. GRUBBS.  
Of Grubbs & Grubbs, Lawyers, Louisville, Ky.



AUGUSTUS E. WILLSON.  
Lawyer, Louisville, Ky.



ROBERT C. KINKEAD.  
Lawyer, Louisville, Ky.

## LAWYERS.



CURTIS F. BURNAM.

Lawyer; former Assistant and Acting Secretary  
U. S. Treasury; Member of Constitutional Con-  
vention; Representative and State  
Senator, Richmond, Ky.



JOHN W. LEWIS.

Lawyer; Member Fifty-fourth Congress from  
Fourth Kentucky District; Vice-Pres-  
ident First National Bank, Spring-  
field, Ky.



MALCOLM YEAMAN.

Senior Member of Yeaman & Yeaman, Lawyers,  
Henderson, Ky.



JAMES M. YEAMAN.

Junior Member of Yeaman & Yeaman, Lawyers,  
Henderson, Ky.

## LAWYERS.



ASHER G. CARUTH.

Lawyer; Former Member of Congress, Louisville, Ky.



LEWIS McQUOWN.

Lawyer.  
Bowling Green, Ky.



JOHN G. SIMRALL.

Vice Chancellor and First Judge of Louisville Law and Equity Court, Louisville, Ky.



ELI H. BROWN.

Lawyer.  
Owensboro, Ky.

## LAWYERS.



ROBERT RIDGELL.

Lawyer; County Judge Estill County, 1858-1862;  
Commonwealth Attorney 1868-1874; Circuit  
Judge 1878-1884; active practice of  
law for nearly fifty years,  
Irvine, Ky.



JAMES A. MITCHELL.

Lawyer; District Attorney L. & N. R. R.; Attor-  
ney and Director Potter, Matlock & Co.,  
Bankers; Member of Board of Educa-  
tion, Bowling Green, Ky.



PHILIP A. GAERTNER.

Lawyer.  
Louisville, Ky.



H. M. WINSLOW.

Lawyer, President Carrollton National Bank.  
Carrollton, Ky.

## LAWYERS.



J. WHEELER MCGEE.

Lawyer; Former Judge of City Court; President  
American Grocery Co., Louisville, Ky.



JOHN MASON BROWN.

Lawyer; Former Assistant City Attorney, Louis-  
ville, Ky.



J. RICHARD WATTS.

Lawyer.  
Louisville, Ky.



W. W. WATTS.

Lawyer; President Commercial Law League of  
America, Louisville, Ky.



LAWYERS.



JOHN C. STROTHER.  
Lawyer, Louisville, Ky.



T. L. EDELEN.  
Lawyer, Frankfort, Ky.



S. B. VANCE.

Lawyer; admitted to the bar at 24, and was one of the most cultured and scholarly men in the profession; died July 15, 1901, aged 69 years, Henderson, Ky.



ROBERT D. VANCE.

Lawyer.  
Henderson, Ky.

## LAWYERS.



RODNEY HAGGARD.

Lawyer; State Senator 1881-85; Judge Clark County Court 1893-98, Winchester, Ky.



OSCAR TURNER.

Lawyer; Member Fifty-sixth Congress, 1899-1901, representing Fifth District, Louisville, Ky.



OSCAR H. ROETKIN.

Lawyer; Nos. 3 and 4 Bradford Building, Covington, Ky.



WALLACE MCKAY.

Lawyer; Democratic Elector for Fifth Congressional District, 1896, Louisville, Ky.

## LAWYERS.



P. H. DARBY.  
Lawyer, Princeton, Ky.



BURTON VANCE.  
Lawyer, Louisville, Ky.

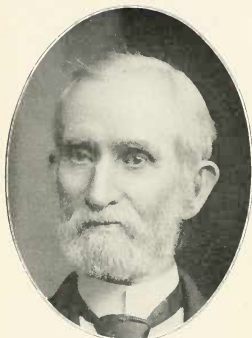


WILLIAM W. STEPHENSON.  
Lawyer; Representative Kentucky Legislature,  
1889-93; State Senator, 1894-98, Harrods-  
burg, Ky.



LAURENCE YONTS,  
Lawyer; Former Dep. U. S. Marshal, Dist. of Ky.;  
Postmaster of Johnson ten years; Notary  
Public, Hopkinsville, Ky.

## LAWYERS.



OLIVER H. STRATTON.

Lawyer; Author of "Philosophy of American Politics," "Republican Mirror," etc., Louisville, Ky.



CHARLES G. HULSEWEDE.\*

Lawyer, Louisville, Ky.  
\*Died June 12, 1901.



GEORGE W. WILLIAMS.

Lawyer; born Nov. 27, 1814; died Sept. 29, 1890; practiced law Hawesville and Owensboro over fifty years; Member Legislature 1849-50; Former Circuit Judge Sixth District, Owensboro, Ky.



J. M. DIAL.

Lawyer; has not held any political office; a Republican; District Deputy Knights of Pythias, Covington, Ky.

## LAWYERS.



W. F. GRIGSBY.  
Lawyer, Springfield, Ky.



R. A. McDOWELL.  
Lawyer, Louisville, Ky.



MARK H. HEISSMAN.  
Lawyer; Member of Legislature; Candidate for  
Republican Nomination County Attorney,  
Louisville, Ky.



L. W. ARNETT.  
Lawyer; assisted in the prosecution of the alleged  
slayers of Gov. Goebel, and author of a  
"History of the Times and Troubles,"  
which led up to his death, Cov-  
ington, Ky.

## LAWYERS AND REAL ESTATE COUNSELOR.



JOHN D. WHITE.

Real Estate Counselor; Graduate Michigan University Law Class 1872; Member Forty-fourth, Forty-seventh and Forty-eighth Congresses; Member Ky. Legis. 1879-80; Prohib. Candidate for Gov. 1900; office with W. C. Priest & Co., Real Estate, Louisville, Ky.



L. F. JOHNSON.

Lawyer.  
Frankfort, Ky.



E. E. MCKAY.

Lawyer, Louisville, Ky.



HIRAM SHREVE.

Lawyer; Capt. and Aide de Camp on Staff of Brig.-Gen. Poyntz, commanding Kv. Division U. S. V., Louisville, Ky.

## PHYSICIANS AND SURGEONS.



LEWIS S. McMURTRY, A. M., M. D.  
President of the Faculty and Professor of Obstetrics, Gynecology and Abdominal Surgery, Hospital College of Medicine; owner Dr. McMurtry's (formerly Jennie Cassedy) Infirmary, Louisville, Ky.



JOSEPH McDOWELL MATHEWS, M. D., LL. D.  
Ex-President American Medical Association; Professor of Surgery and Clinical Professor of Diseases of Rectum, Hospital College of Medicine, Louisville, Ky.



THOMAS H. STUCKY, A. M., M. D.  
Vice-President of the Faculty and Professor of the Principles and Practice of Medicine and Clinical Medicine, Hospital College of Medicine, Louisville, Ky.

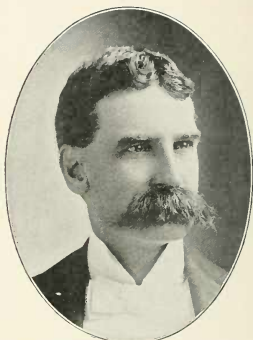


FRANK C. WILSON, A. M., M. D.  
Professor of Diseases of the Chest and Physical Diagnosis, Hospital College of Medicine, Louisville, Ky.

## PHYSICIANS AND SURGEONS.



DUDLEY S. REYNOLDS, A. M., M. D.  
Professor Ophthalmology, Otology and Medical  
Jurisprudence, Hospital College of Medicine,  
Louisville, Ky.



H. HORACE GRANT, A. M., M. D.  
Treasurer of the Faculty and Professor of Surgery  
and Clinical Surgery, Hospital  
College of Medicine, Louisville, Ky.



HUGH N. LEAVELL, M. D.  
Physician and Surgeon; Adjunct Professor of  
Physiology and Chief of Otolological and  
Laryngological Clinic, Hospital  
College of Medicine, Louisville, Ky.



FRANK T. FORT, M. D.  
Assistant to Chair of Surgery, Hospital College  
of Medicine; Surg. I. C. R. R.; Mem. Amer. Ky.  
State. S. W. Ky. and Jeff. Co. Med. Assns.;  
Vice-Pres. Practitioners' Club; Med.  
Exam. Penn. Mutual and Hartford  
Life Ins. Cos., Louisville, Ky.



## PHYSICIANS AND SURGEONS.



**JAMES MORRISON BODINE, M. D.**  
Dean of the Faculty and Professor of Anatomy  
University of Louisville, Medical De-  
partment, Louisville, Ky.



**WILLIAM OWEN ROBERTS, M. D.**  
Physician and Surgeon; Professor of Principles  
and Practice of Surgery and Clinical  
Surgery, University of Louisville,  
Medical Department, Louis-  
ville, Ky.



**JOHN G. CECIL, B. S., M. D.**  
Professor Material Medica, Therapeutics and Pub-  
lic Hygiene, University of Louisville,  
Medical Department, Louis-  
ville, Ky.



**I. N. BLOOM, A. B., M. D.**  
Clinical Professor of Genito-Urinary Diseases,  
University of Louisville, Medical De-  
partment, Louisville, Ky.

## PHYSICIANS AND SURGEONS.



ROBERT G. FALLIS, M. D.

Physician; Assistant to the Chair of Materia  
Medica and Therapeutics, Hospital  
College of Medicine, Louisville, Ky.



HENRY HEUSER, M. D.

Physician; Assistant to the Chair of Otology and  
Laryngology, Hospital College of Medi-  
cine, Louisville, Ky.



J. P. FERGUSON, A. M., M. D.

Physician and Surgeon; Anesthetist to the Chair  
of Surgery, Hospital College of Medi-  
cine, Gray Street Infirmary,  
Louisville, Ky.



JOHN W. KREMER, M. D.

Physician and Surgeon; Assistant to the Chair of  
Surgery, Hospital College of Medicine,  
Louisville, Ky.

## PHYSICIANS AND SURGEONS.



THOMAS CRAIN EVANS, M. D.  
Physician; Dean and Professor of Ophthalmology,  
Otology and Laryngology, Medical De-  
partment, Kentucky University,  
Louisville, Ky.



HENRY ENOS TULEY, A. B., M. D.  
Physician; Secretary Faculty and Professor of  
Obstetrics, Medical Department Ken-  
tucky University, Louisville, Ky.



JAMES WEYMS BENNERS, M. D.  
Physician; Clinical Assistant in Obstetrics, Med-  
ical Department Kentucky University,  
Louisville, Ky.



OLIVER HOLT KELSALL, A. M., M. D.  
Physician; Clinical Assistant in Gynecology and  
Assistant Professor of Bacteriology,  
Medical Department Kentucky  
University, Louisville, Ky.

## PHYSICIANS AND SURGEONS.



ORVILLE A. KENNEDY, B. S., M. D.  
Physician; formerly Professor of Chemistry Central University; Lecturer on Principles and Practice of Medicine, Kentucky University, Louisville, Ky.



FREDERICK C. TIUN, M. D.  
Physician; Clinical Assistant in Ophthalmology, Otology, Anesthetist, Kentucky University, Louisville, Ky.



LOUIS KAELIN, M. D.  
Physician, Louisville, Ky.



W. YOUNGER HOWARD, M. D.  
Physician, Louisville, Ky.

Digitized by Microfilm

## PHYSICIANS AND SURGEONS.



GEO. T. MOUNSEY, M. D.

Physician and Surgeon; Instructor Practice of  
Medicine and Diseases of Children, Ken-  
tucky School of Medicine; Member  
Louisville Lodge Elks, Lewis  
Lodge F. & A. M.; Member  
Ky. State Med. So.,  
Louisville, Ky.



JOHN W. GALVIN, M. D.

Physician; Graduate University of Louisville,  
Medical Department, 1894; Assistant in Ob-  
stetrics and Gynecology, Kentucky  
School of Medicine; Ex-Member  
Louisville School Board,  
Louisville, Ky.



HENRY CHENOWETH, M. D.

Graduated in the Class of 1844, University of  
Louisville; in active practice fifty-eight  
years, St. Matthews, Ky.



GEORGE W. CROFT, M. D.

Physician and Surgeon; born in Staunton, Va.;  
attended college, first year, Chapel Hill,  
N. C.; second year, Richmond, Va.;  
third and fourth years, Louisville  
Medical College; Assistant An-  
atomy Kentucky School of  
Medicine, Louisville, Ky.

## PHYSICIANS AND SURGEONS.



HENRY ORENDORF, M. D.

Physician and Surgeon; Professor Therapeutics,  
Genito-Urinary, Venereal and Skin Dis-  
eases, Kentucky School of Medicine,  
Louisville, Ky.



JESSE T. DUNN, M. D.

Clin. Lecturer Diseases of Rectum; Chief Surg.  
Laboratory Oper. Surgery; Lecturer on Surg-  
ery Ky. School of Med.; Oper. Private X-  
ray Laboratory; Surg. and Exam. Surg.  
Fid. & Cas. and Travelers' Acc. &  
Life Ins. Cos., Louisville, Ky.



FOUCHE W. SAMUEL, A. M., M. D.

Physician and Surgeon; Professor of Surgery and  
Clinical Surgery Kentucky School of  
Medicine, Louisville, Ky.



OSCAR C. DILLY, PH. G., M. D.

Lecturer and Chemist; Professor Materia Medica  
and Pharmacology Louisville College of  
Pharmacy; Lecturer Materia Medica and  
Pharmacology Kentucky School of  
Medicine; Ex-Pres. Ky. Pharm.  
Asso., Louisville, Ky.

## PHYSICIANS AND SURGEONS.



**A. MORGAN CARTLEDGE, M. D.**  
Physician and Surgeon; Professor of Gynecology  
and Abdominal Surgery Louisville Medical  
College, Louisville, Ky.



**A. P. MORGAN VANCE.**  
Physician and Surgeon, Louisville, Ky.



**JAMES S. CHENOWETH, M. D.**  
Physician and Surgeon; Surgeon Deaconess Hos-  
pital; Consulting Surgeon Louisville  
City Hospital, Louisville, Ky.



**PRESCOTT BROWN SCOTT, A. M., M. D.\***  
Physician, Louisville, Ky.  
\*Died September 24, 1900.

## PHYSICIANS AND SURGEONS.



A. LEIGHT MONROE, M. D.

Physician and Surgeon; Dean and Professor of  
Materia Medica and Clinical Gynecology  
and Orificial Surgery Southwestern  
Homeopathic College, Louis-  
ville, Ky.



GEORGE S. COON, M. D.

Physician and Surgeon; Professor of Surgery and  
Surgical Gynecology Southwestern Homeo-  
pathic Medical College, Louisville, Ky.



JESSE E. MANN, M. D.

Physician; Professor of Ophthalmology, Otology,  
Rhino- and Laryngology, Southwestern  
Homeopathic Medical College, Louis-  
ville, Ky.



THEODORE H. HOLLINSHEAD, M. D.

Physician and Surgeon; Professor of Physiology  
Southwestern Homeopathic Medical Col-  
lege, Louisville, Ky.



## PHYSICIANS AND SURGEONS.



S. E. STANLEY, M. D.

Physician; Secretary-Treasurer Falls Cities  
Homeopathic Medical Society; Professor  
of Skin Diseases Southwestern Homeo-  
pathic Medical College, Louis-  
ville, Ky.



HERVEY S. KELLER, M. D.

Physician; Adjunct Professor Materia Medica  
Southwestern Homeopathic Medical College,  
Louisville; Ex-Pres. Ky. Homeopathic  
Medical Association, Frankfort, Ky.



BENJAMIN A. GARR, M. D.

Physician; Grand Medical Examiner Ancient Order  
United Workmen of Kentucky, Louis-  
ville, Ky.



B. JONES FARR, M. D.

Physician, Louisville, Ky.

## PHYSICIANS AND SURGEONS.



WILLIAM O. BAILEY, M. D.  
Physician; Demonstrator of Ophthalmology University of Louisville, Medical Department, Louisville, Ky.



WILLIAM B. DOHERTY, M. D.  
Lecturer on Obstetrics; Quiz-master in Obstetrics University of Louisville, Medical Department, Louisville, Ky.



DAVID YANDELL ROBERTS, M. D.  
Hospital Steward First Ky. Inf. U. S. V., Span.-Amer. War; Ass't to Professor Clinical Surgery and to the Demonstrator of Surgery and Surgical Dressing, University of Louisville, Medical Department, Louisville, Ky.



J. T. WINDELL, M. D.  
Physician; Curator of the Museum, University of Louisville, Medical Department, Louisville, Ky.

## PHYSICIANS AND SURGEONS.



SIMRALL ANDERSON, M. D.  
Physician and Surgeon; Assistant to Professor of  
Obstetrics and Gynecology, University of  
Louisville, Medical Department, Louis-  
ville, Ky.



GEORGE F. SIMPSON, M. D.  
Physician and Surgeon; Graduated University of  
Louisville, 1881, and in New York, 1891;  
School Trustee 1889 to 1899; Local Sur-  
geon Monon Railroad, Louis-  
ville, Ky.



WILLIAM T. LEACHMAN, M. D.  
Physician, Louisville, Ky.



GEORGE C. LEACHMAN, M. D.  
Physician, Louisville, Ky.

## PHYSICIANS AND SURGEONS.



JAMES W. GUEST, M. D.

Physician; Grad. Univ. of Va., 1886, and Univ. and Bellevue Hosp. Med. College, 1888; served in Bellevue, Chambers St. and Harlem Hospitals, N. Y., and St. Catharine Hosp., Brooklyn; City Physician Louisville; Comr. Gen. Ky. Lun. Asy.; Med. Exam. Nat. Life and Covenant Mut.; Pres. Practitioners' Club, Louisville, Ky.



THOMAS PAGE GRANT, M. D.

Physician and Surgeon; Vice-Pres. Alumni, Med. Dep't University of Louisville; Member Miss. Val. Med. Ass'n and Ass'n Mil. Surgeons U. S.; late Capt. and Ass't Surg. K. S. G.; Director Dr. Grant's Orthopedic Sanitarium, Louisville, Ky.



CURRAN POPE, M. D.

Physician; Sup't of the Dr. Curran Pope Sanatorium for Nervous Diseases, Louisville, Ky.



D. H. KELLER, M. D.

Physician; Author; Inventor; Graduate of University and Bellevue Hospital Medical College, New York, 1900, Louisville, Ky.

## PHYSICIANS AND SURGEONS.



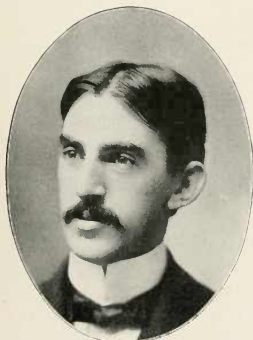
HENRY M. SKILLMAN, M. D.

Ex-Pres. Ky. State Med. Society; Member Amer. Med. and Miss. Val. Med. Ass'ns; former member of the Faculty of Medical Department Transylvania University, Lexington, Ky.



FRANK O. YOUNG, M. D.

Ex-Pres. Nat. Sanitary Ass'n; Member Amer. Med. Ass'n and Ky. State Med. Ass'n; President Board of Health, Lexington, Ky.



THOMAS STONE LEWIS, M. D.

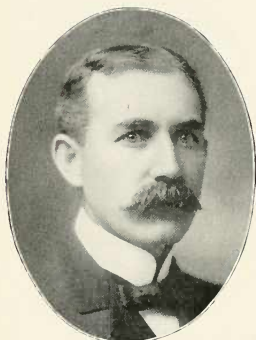
Physician and Surgeon; Pathologist Eastern Kentucky Asylum; Surgeon on Staff of Good Samaritan Hospital, Lexington, Ky.



A. C. LEONARD, M. D.

Physician and Surgeon; Vice-Pres. Ky. Homeo. Med. Society; Ex-Res. Surgeon Chicago Homeo. Hospital; Member Am. Inst. Homeopathy; Surgeon Widows' and Orphans' Home; I. O. O. F., Lexington, Ky.

## PHYSICIANS AND SURGEONS.



WILLIAM B. MCCLURE, M. D.  
Physician and Surgeon, Lexington, Ky.



DAVID BARROW, M. D.  
Physician and Surgeon, Lexington, Ky.



F. H. CLARKE, M. D.  
Physician and Surgeon, Lexington, Ky.



U. V. WILLIAMS, M. D.  
Physician, Frankfort, Ky.

## PHYSICIANS AND SURGEONS.



J. D. KISER, M. D.  
Physician and Surgeon, Lexington, Ky.



J. A. STUCKY, M. D.  
Physician, Lexington, Ky.



J. B. JACKSON, M. D.  
Physician and Surgeon, Hopkinsville, Ky.



EARLE J. BRASHEAR, M. D.  
Member of Kentucky State Medical Society,  
Deftoe, Ky.

## PHYSICIANS AND SURGEONS.



E. E. HUME, M. D.  
Physician and Surgeon, Frankfort, Ky.



J. G. SOUTH, M. D.  
Physician, Frankfort, Ky.



JAMES H. MOORE, M. D.  
Physician and Farmer; Delegate to First Agricultural Congress, held at Selma, Ala.;  
Member Constitutional Convention of  
Kentucky, 1890-91, Harrodsburg, Ky.



THOMAS D. WILLIAMS, M. D.  
Physician and Surgeon; Member of Ky. State  
Med. and Amer. Med. Ass'ns; Director  
People's Bank, Bardstown, Ky.



## PHYSICIANS AND SURGEONS.



**JAMES HUGHES LETCHER, M. D.**  
 Physician and Surgeon; President 1901, State  
 Medical Society; Surgeon in Chief Letcher's  
 Hospital; Surgeon for L. & N., I. C. and  
 L., H. & St. L. Railroads, Hender-  
 son, Ky.



**ARCHIBALD DIXON, M. D.**  
 Physician and Surgeon; Ex-President Mississippi  
 Valley Medical Association; Ex-President  
 Kentucky State Medical Society,  
 Henderson, Ky.



**WILLIAM A. QUINN, M. D.**  
 Physician and Surgeon, Henderson, Ky.



**BEN LETCHER, M. D.**  
 Physician and Surgeon; Member State Medical  
 Society and District and County Medical  
 Societies, Henderson, Ky.

## PHYSICIANS AND SURGEONS.



A. H. KLEISER, M. D.  
Physician, Eminence, Ky.



J. J. RODMAN, M. D.  
Physician and Surgeon, Owensboro, Ky.



D. M. GRIFFITH, M. D.  
Physician Eye, Ear, Nose and Throat; former  
Oculist City Hospital; former President R.  
M. A., Owensboro, Ky.



JOSEPH RAY ANDERSON, M. D.  
Physician Eye, Ear, Nose and Throat; Fellow  
Berlin Anglo-American Society; Oculist  
City Hospital, Owensboro, Ky.

## PHYSICIANS AND SURGEONS



**R. C. McCHORD, M. D.**  
Physician and Surgeon; Ex-President Kentucky  
State Medical Society; Surgeon to and  
Owner Elizabeth Hospital, Lebanon,  
Ky.



**WILLIAM M. FUQUA, M. D.**  
Former Professor of Anatomy, Memphis Medical  
College, Hopkinsville, Ky.



**CLARENCE H. VAUGHT, M. D.**  
Physician and Surgeon; President Board of  
Health; Ex-Secretary United States Pension  
Board; Ex-Secretary Practitioners' Club;  
Surgeon for L. & N. R. R.; President  
Central Kentucky Cigar Manufact-  
uring Co., Richmond, Ky.



**JAMES ANDREW AVERDICK, M. D.**  
Graduated Class of 1874, Medical College of Ohio,  
Cincinnati; A. B. S. M. Institute, Dayton, O.,  
1869; Coroner, 1875-76; Member Board of  
Education, Covington, 20 years, Pres-  
ident 2 years; Member Kentucky  
Legislature, 1902, Covington,  
Ky.

## PHYSICIANS AND SURGEONS.



JOHN F. TAYLOR, M. D.  
Physician and Surgeon, Louisville, Ky.



FRANK KARRICK GREEN, M. D.  
Physician, Louisville, Ky.



CHRISTOPHER K. WALLACE, M. D.  
Physician and Surgeon; Ex-House Physician; Post  
Graduate Hospital and School of Chicago;  
Ex-Superintendent Institute Feeble  
Minded Children, Frank-  
fort, Ky.



BEN. L. BRUNER, M. D.  
Former Physician and Surgeon Kentucky Peni-  
tentiary; First Lieut. and Ass't Surgeon  
Fourth Ky. Vol. Inf., Span.-Amer. War;  
Member Ky. Legislature, 1902,  
Hardyville, Ky.

PHYSICIANS AND SURGEONS.



J. BRENT PALMER, M. D.

Physician and Surgeon; Major and Surgeon First Kentucky Volunteer Infantry, Spanish-American War, Louisville, Ky.



J. HUNTER PEAK, M. D.

Physician and Surgeon; Former U. S. Pension Surgeon; Expert U. S. Pension Surgeon, Louisville, Ky.



EDWARD LEE PEARCE, M. D.

Physician and Surgeon; Visiting Surgeon Louisville City Hospital; Surgeon I. C. R. R. Co.; Surgeon Louisville, Legion, eleven years, Louisville, Ky.



JAMES C. MITCHELL, M. D.

Graduate of Bennett Eclectic Medical College, Chicago, Ill., 1897; Resident Physician and Surgeon Cook Co. Hospital, 1897-98-99; Medical Examiner A. O. U. W., Degree of Honor, and Woodmen of World, Louisville, Ky.

## PHYSICIANS.



LUKE P. WILLIAMS, M. D.

Physician; Pastor First Baptist Church; Pres't  
Bank of Morehead to January, 1901; Mem-  
ber Kentucky Constitutional Con-  
vention, 1890-91, Morehead, Ky.



FREDERICK DEHAVEN, M. D., D. O.

Homeopathic and Osteopathic Physician; Presi-  
dent of the Kentucky School of Oste-  
opathy, Louisville, Ky.



R. P. BUCKMASTER.

Osteopathic Physician; Graduated under founder  
of Osteopathy, at Hicksville, Mo.,  
Frankfort, Ky.



H. E. NELSON.

Osteopathic Physician; Trustee American Oste-  
opathic Association; Secretary and Treas-  
urer Kentucky Osteopathic Associa-  
tion, Louisville, Ky.

## DENTISTS.



W. W. BARNES, M. D., D. D. S.  
Dentist; Vice-President Kentucky State Dental  
Association, Louisville, Ky.



WILLIAM E. GRANT, M. D., D. D. S.  
Dentist; Dean and Professor of Orthodontia,  
Louisville College of Dentistry, Louis-  
ville, Ky.



J. W. DAUGHERTY, D. D. S.  
Dentist; Graduate of the Louisville College of  
Dentistry, Bardstown, Ky.



WINFIELD SCOTT SMITH, M. D., D. D. S.  
Dentist; Former Professor Prosthetic Dentistry,  
Crown and Bridge Work, Prosthetic Tech-  
nic, Louisville, Ky.

## DENTISTS.



LLOYD A. KING, D. D. S.

Dentist; Member State Dental Association; Member Tri-State Dental Association, Henderson, Ky.



A. C. COOK, D. D. S.

Dentist; Member Kentucky State Dental Association, Georgetown, Ky.



W. L. HANSBRO, D. D. S.  
Dental Surgeon, Paducah, Ky.



EDGAR NEWTON FRUIT, D. D. S.  
Dental Surgeon, Hopkinsville, Ky.

Digitized by Microfilm



## DENTISTS.



V. H. HOBSON, A. M., M. D., D. D. S.  
Dentist, Richmond, Ky.



C. L. SEEBOLT, D. D. S.  
Dentist; Member Ky. State Dental Ass'n and Falls  
City Dental Club, Louisville, Ky.

## DENTAL ASSOCIATIONS.

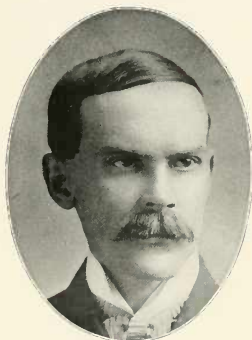


C. E. NARY.  
Dentist; Manager Wayt Dental Co., the oldest  
dental concern in Kentucky—nearly thirty  
years at Third and Jefferson, Louis-  
ville, Ky.



GEORGE REISS.  
Dentist; Proprietor Louisville Dental Parlors,  
established eighteen years, Louisville, Ky.

## SPECIALISTS AND VETERINARY SURGEONS.



M. H. BROWN, M. D.  
Specialist in Hernia and Chronic Diseases, Louisville, Ky.



WM. EDWARDS BAXTER, M. D., D. D. S.  
Specialist Mouth, Nose and Throat; Former Pres't  
Ky. State Dent. Ass'n; Former Demon-  
strator Operative Dentistry, Central Uni-  
versity; Inventor; Composer of  
Music, Frankfort, Ky.



DR. G. GOLDSTEIN.  
Optic Specialist, Louisville, Ky.



WILLIAM H. NETHERLAND.  
Veterinary Surgeon, Louisville, Ky.

## VETERINARY SURGEONS, DRUGGISTS AND PHARMACISTS.



DR. S. A. BRADLEY.

Veterinary Surgeon; Graduate Toronto, Canada;  
 Veterinary Surgeon Police and Fire De-  
 partments and Member Drs. Bradley  
 Bros. Stock Food Co., Louisville, Ky.



DR. HENRY ALBERS.

Veterinary Surgeon, Louisville, Ky.



SIMON N. JONES.

Pres. Simon N. Jones Co., Druggists and Pharm-  
 acists; Pres. Louisville College of Pharm-  
 acy, Louisville, Ky.



GEORGE D. BOLDRICK.

President Hugh Murray Drug Co.; Pres. Lebanon  
 Water Works, Lebanon, Ky.

## PUBLISHERS, EDITORS, AUTHORS.

COURIER-JOURNAL.



WALTER N. HALDEMAN.\*

President Louisville Courier-Journal Co., Louisville, Ky.

\*Died May 13, 1902.



HENRY WATTERSON.

Editor Louisville Courier-Journal; Ex-Member Congress; Author, Lecturer and Statesman, Louisville, Ky.



WM. B. HALDEMAN.

Journalist; General Manager Courier-Journal, Louisville, Ky.



BRUCE HALDEMAN.

Vice-Pres't Louisville Courier-Journal Co.; Member Board of Trade and Commercial Club; Director Pendennis Club, Louisville, Ky.

## PUBLISHERS, EDITORS, AUTHORS.

COURIER-JOURNAL.



ARTHUR Y. FORD.  
Managing Editor Courier-Journal, Louisville, Ky.



GEORGE E. JOHNSON.  
Editor Twice-a-Week Courier-Journal, Louisville, Ky.

LOUISVILLE TIMES.



EMMET G. LOGAN.  
Editor-in-Chief Louisville Times, Louisville, Ky.



ROBERT W. BROWN.  
Managing Editor Louisville Times, Louisville, Ky.

## PUBLISHERS, EDITORS, AUTHORS.



RICHARD W. KNOTT,  
Editor Evening Post, Louisville, Ky.



J. STODDARD JOHNSTON.  
Editor. Author and Historian, Louisville, Ky.



HENRY CLEVELAND WOOD.  
Writer; Author of "The Kentucky Outlaw;" "The  
Love that Endured;" "Saint Heart and  
Fair Lady," etc., Harrisburg, Ky.



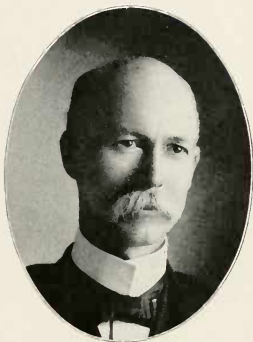
MADISON J. CAWEIN.  
Poet; Author, Louisville, Ky.

## PUBLISHERS, EDITORS, AUTHORS.



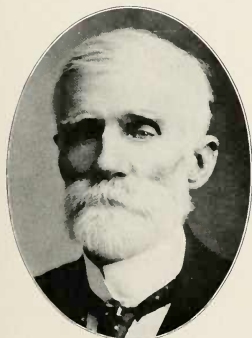
SAMUEL J. ROBERTS.

Editor Daily Leader; United States Collector of Internal Revenue, Seventh District, Lexington, Ky.



CHARLES M. MEACHAM.

Pub. and Ed. Hopkinsville "Kentuckian" since 1879; Pres. Ky. Press Asso. 1893; Former Pres. Board of Commissioners West. Ky. Insane Asylum; Mem. Dem. State Ex. Com. since 1895; born Christian County, June 14, 1858; Hopkinsville, Ky.



J. GIVENS CRADDOCK.

Editor "Kentuckian Citizen;" born August 28, 1825; Editor and Writer fifty-five years; Mexican War Veteran; Sec. State Society Mexican Veterans; Former Confederate Guide, Paris, Ky.



ROBERT M. KELLY.

Patent Lawyer; Former Editor of the "Commercial;" Col. Fourth Ky. Inf., U. S. Vol., Army of the Cumberland; formerly Collector Int. Rev. Seventh District, and U. S. Pension Agent, Louisville, Ky.

## PUBLISHERS AND PRINTERS.

GEO. G. FETTER PRINTING CO.



GEO. G. FETTER.

President Geo. G. Fetter Printing Co.; President  
Fetter Law Book Co., Louisville, Ky.



HOWARD C. WEDEKEMPER.

Treasurer and General Manager Geo. G. Fetter  
Printing Co.; Treasurer Fetter Law Book Co.,  
Louisville, Ky.



J. ED. REESE.

Vice-President Geo. G. Fetter Printing Co.,  
Louisville, Ky.



EDWARD C. GERMAN.

Secretary Geo. G. Fetter Printing Co., Louis-  
ville, Ky.



PUBLISHERS AND PRINTERS.

GEO. G. FETTER PRINTING CO.



J. FRANK WHITE.

Manager Stationery Department Geo. G. Fetter  
Printing Co., Louisville, Ky.



CHARLES F. BRECKEL.

Superintendent Geo. G. Fetter Printing Co.,  
Louisville, Ky.



H. P. WARDEN.

Vice-President Fetter Law Book Co., Louis-  
ville, Ky.



BEN. LABREE.

Editor and Manager Sub. Book Dept. Geo. G.  
Fetter Printing Co.; Author "Pictorial Bat-  
tles of the Civil War," "Confederate  
Soldier," "Camp Fires of the Confed-  
erates," "Notable Men of Ky.," etc.,  
Louisville, Ky.

## PUBLISHERS, EDITORS, WRITERS.



WM. B. BREWER.

Editor; Publisher; Merchant; Proprietor of the  
Review and Mayor of the town of Fair-  
view, Ky.



CHARLES M. LEWIS.

Editor of the Shelby Sentinel and Harrodsburg  
Democrat, Shelbyville, Ky.



S. A. MULLIKIN.

Publisher of fine Bibles, subscription books and  
other high grade publications, Louis-  
ville, Ky.



BEN. F. LIPPOLD.

Newspaper Writer and Advertising Specialist,  
Louisville, Ky.

## MUSICIANS.



KARL SCHMIDT.

Organist Temple Adath Israel and Conductor of  
the Philharmonic Society, Louisville, Ky.



GEORGE B. SELBY.

Organist and Musical Director, Louisville, Ky.



WALTER W. BOUTELLE.

Teacher of the Piano and Pipe Organ; Organist  
and Choir Director Warren Memorial  
Presbyterian Church, Louisville, Ky.



JOHN MASON STRAUSS.

Organist and Composer; Organist and Choir Di-  
rector St. Paul's Protestant Episcopal  
Church, Louisville, Ky.

## MUSICIANS.



HENRY U. GOODWIN.

Organist Broadway Baptist Church; Teacher of Piano, Louisville, Ky.



ANDREW E. SEIBERT.

Bandmaster First Regiment Band and Orchestra;  
Member B. P. O. Elks No. 8, Louisville, Ky.



J. HENRY BRADY.

Musician and Inventor; Inventor of Eureka Harmony Chart—The Omnichord; Author of "Saxton Method for Guitar," Louisville, Ky.



DAVID P. FAULDS.

Composer; Dealer in Musical Instruments and Sheet Music, Louisville, Ky.

## ARTISTS.



HARVEY JOINER.  
Artist, Louisville, Ky.



A. O. REVENAUGH.  
Portrait Artist; M. D. Graduate University of  
Michigan, Ann Arbor, Mich., Louis-  
ville, Ky.



JOHN A. MUCKELBAUER.  
Artist, Louisville, Ky.



J. L. CUSICK.  
Secretary Ky. and Tenn. Photographers' Assn.;  
awarded two prizes 1901 Convention,  
Louisville, Ky.

## PHOTOGRAPHERS.



J. HENRY DOERR.

Photographer; First President Ky. and Tenn.  
Photographers' Assn., Louisville, Ky.



EDWIN KLAUBER.

Photographer and Fine Art Dealer, Louisville, Ky.



JAMES MULLEN.

Photographer, Lexington, Ky.



WOLDEMARMUS.

Photographer, Louisville, Ky.

PHOTOGRAPHERS.



W. G. THUSS.

Of Thuss & Lind, Photographers; President Ky.  
and Tenn. Photographers' Assn., Louis-  
ville, Ky.



FRANK C. LIND.

Of Thuss & Lind, Photographers, Louisville, Ky.



FRANK E. WYBRANT.  
Photographer, Louisville, Ky.



E. CARL WOLFF.  
Photographer, Frankfort, Ky.

Digitized by Microsoft®

## PHOTOGRAPHERS, PHONOGRAPHS.



WILLIAM A. JOHNSTON.  
Photographer, Louisville, Ky.



FRANZ JOSEPH SPENGLER.  
Master of Photography, Lexington, Ky



LOUIS SCHLEGEL.  
Photographer, Richmond, Ky.



CHARLES A. RAY.  
President Ray Phonograph Co.; General Agent  
Garnett Fire Alarm Telegraph Co., Louis-  
ville, Ky.



## CAPITALISTS, BROKERS.



LAWRENCE JONES.  
Capitalist, Louisville, Ky.



SAM STONE BUSH.  
Financial Agent; Successful Operator in Suburban  
Real Estate; erected the Equitable Building;  
organized and established the Louisville  
Bolt & Iron Co., Louisville, Ky.

## COMMERCIAL AGENCY.



GEORGE ROBINSON HUNT, JR.  
Of Hunt & Hutchings. Stock, Bond and Grain  
Brokers, Louisville, Ky.



ROBERT C. CARSON.  
Superintendent of the Louisville Office of the  
Bradstreet Co. Commercial Agency, Louis-  
ville, Ky.

## BANKERS.

SOUTHERN NATIONAL BANK.



JAS. S. ESCOTT.

Former United States Bank Examiner; President  
Southern National Bank; Treasurer Louis-  
ville Horse Show Association, Louis-  
ville, Ky.



W. J. THOMAS.

First Vice-President Southern National Bank of  
Louisville, Shelbyville, Ky.



FRED. N. LEWIS.

Second Vice-President Southern National Bank;  
Lewis & Chambers, Seeds and Agricultural  
Implements, Louisville, Ky.



HENRY D. ORMSBY.

Cashier Southern National Bank, Louisville, Ky.

Digitized by Microsoft®

## BANKERS.



LOGAN C. MURRAY.

President American National Bank; Director  
Board of Trade and Commercial Club,  
Louisville, Ky.



JAMES S. BARRET.

President German Security Bank, an original in-  
corporator and President since organization,  
1867; bank just paid 69 dividends and never  
skipped one; Director Louisville Water  
Co., Louisville, Ky.



JOHN DOERHOEFER.

Vice-President Union National Bank, Louis-  
ville, Ky.



LUKE O. COX.

President Union National Bank, Louisville, Ky.

## BANKERS.



GEORGE W. LEWMAN.

President First National Bank, Louisville, Ky.



OSCAR FENLEY.

President National Bank of Kentucky, Louisville, Ky.



CLINTON C. McCLARTY.

Cashier First National Bank, Louisville, Ky.



EDWIN W. HAYS.

Cashier National Bank of Kentucky, Louisville, Ky.

**BANKERS.**



**H. C. RODES.**

President Citizens' National Bank; Director Louisville Public Warehouse Co.; Director Bourbon Stock Yards, Louisville, Ky.



**DANIEL L. MOORE.**

Planter and Ranchman; Member State Senate, 1881-1882; President Mercer National Bank, Harrodsburg, Ky.



**JAMES S. WITHERS.**

Cashier of the National Bank of Cynthiana, Cynthiana, Ky.



**A. H. WARD.**

Lawyer (retired), age 87 years; President National Bank of Cynthiana for the past 20 years, Cynthiana, Ky.

## BANKERS.



DAVID H. JAMES.

President Second National Bank, Lexington, Ky.



JACOB H. GRAVES.

Vice-President Second National Bank of Lexington; large owner of real estate and of a large stock and cattle farm, Chilesburg, Ky.



JOHN A. MIDDLETON.

President Farmers' &amp; Traders' Bank, Shelbyville, Ky.



W. H. TIPTON.

County Judge and President Citizens' National Bank, Shelbyville, Ky.

Digitized by Microfilm

## BANKERS.



JAS. WEIR.

Eighty years old. Oldest Bank President in continuous service in the United States; President National Deposit Bank, Owensboro, Ky.



H. P. MONTGOMERY.

President First National Bank; President Royal Springs Ice Co., and President Georgetown Electric Street Railway, Georgetown, Ky.



S. K. SNEED.

Cashier Henderson National Bank, Henderson, Ky.



R. H. SOAPER.

President Henderson National Bank; Exporter Leaf and Strips Tobacco, Henderson and Uniontown, Ky.

## BANKERS.



FAYETTE HEWITT.

Asst. Adj. Gen. Orphans' Brig., C. S. A.; Quartermaster State of Ky.; Auditor State of Ky.; Pres. Frankfort Safety Vault & Trust Co., and President State Nat. Bank, Frankfort, Ky.



CHARLES E. HOGE.

Cashier State National Bank, Frankfort, Ky.



W. H. DAUGHERTY, M. D.

Physician and Farmer, 67 years, old; former Member of the Kentucky Legislature, President Corinth Deposit Bank, Corinth, Ky.



THOMAS BLACKWELL.

General Merchandise, Strips Tobacco, Coal Mining, etc.; President Webster Co. Bank, Clay, Ky.



## BANKERS.



WILLIAM B. NOE.

Lawyer; President Bank of Calhoun, Calhoun, Ky.



W. F. PEAK.

Born Dec. 1, 1829, in Henry, now Trimble Co.;  
Coroner 1854-58; Sheriff 1858-60; Clerk County  
and Circuit Courts 1863-70; Clerk Circuit  
Court 1870-80; Master Com. ten years;  
Rep. Legis. 1883-4 and 1891-2-3; Mer-  
chant twenty-five years; Pres. B.,  
L. & D. Bank, Bedford, Ky.



JAMES M. RICHART.

Merchant; President Owingsville Banking Co.,  
Owingsville, Ky.



C. L. KING.

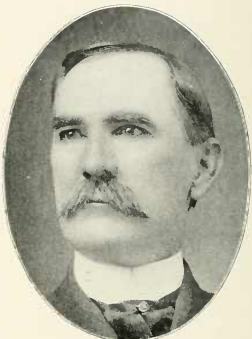
President Corydon Deposit Bank, Corydon, Ky.

## BANKERS.



W. S. COOK.

President Graves County Banking & Trust Co.,  
Mayfield, Ky.



M. J. FARRIS.

Farmer and Stock Raiser; President Citizens'  
National Bank, Danville, Ky.



HENRY G. SANDIFER.

Cashier Boyle National Bank, Danville, Ky.



J. A. QUISENBERRY.

Cashier Citizens' National Bank, Danville, Ky.

## BANKERS.



R. B. LANCASTER.  
President Citizens' National Bank and Lancaster  
Mill Co., Lebanon, Ky.



S. J. ASHBROOK.  
Farmer and Miller; President Farmers' National  
Bank, Cynthiana, Ky.



JOHN B. TRICE.  
Cashier Planters' Bank since 1891, Hopkins-  
ville, Ky.



STEPHEN E. TRICE.  
President Planters' Bank 1873-1900, Hopkins-  
ville, Ky.

## BANKERS.



WILLIAM T. HORD.

Dealer in Live Stock; President Farmers' & Merchants' Bank, Greenup, Ky.



A. C. WITHERSPOON.

In banking business for 35 years; now President Citizens' Bank, Lawrenceburg, Ky.



W. K. RAYBURN.

Merchant and President People's Bank; one of the oldest citizens and an official member Cumberland Presbyterian Church, Adairville, Ky.



TOM B. PELL.

President Bank of Lewisport; Senior Member of the firm of Pell Bros., successors to J. C. Pell & Sons, in business since 1844, Lewisport, Ky.

## BANKERS.



BENJ. T. HEAD.  
Cashier Farmers' Bank, Burgin, Ky.



RICHARD C. T. HEAD.  
Cashier of Citizens' Bank, Stamping Ground, Ky.



J. SAMUEL HEAD, JR.  
Cashier Jackson Deposit Bank, Jackson, Ky.



W. B. SMITH.  
Cashier First National Bank, Glasgow, Ky.

## BANKERS.



JOHN M. BELL.

Cashier First National Bank, Lexington, Ky.



E. M. SHELLEY.

Cashier Burnside Banking Co.; Capt. Co. 1, Fourth  
Regt. Ky. Inf., U. S. V., Span.-Am. War,  
Burnside, Ky.

DAVID BANKS.

Cashier Planters' State Bank, Henderson, Ky.



GEORGE C. HALL, JR.

Cashier Worthville Deposit Bank, Worthville, Ky.

## BANKERS.



WILLIAM SIMMONS.

Farmer and Stock Man; Director Bullitt County Fair Association; President People's Bank, Shepherdsville, Ky.



J. C. REVILL.

Born in Owen County; Elected Circuit Court Clerk 1874 and 1880; Organized Boone County Deposit Bank 1886. Cashier of same ever since, Burlington, Ky.



EDWARD GARRETT.

Cashier First National Bank; Member City Council; Member Ky. No. 50, Odd Fellows, Princeton, Ky.



W. SHELBY WILSON.

Cashier Deposit Bank, Eminence, Ky.

## BANKERS.



CATLETT W. THOMPSON.

Founder and Owner of the People's Bank of Metcalfe Co., a Private Bank, Edmonton, Ky.



JOSEPH LEONARD HENDRIX.

Farmer; Member of the Baptist Church and has always been a Democrat; President Bank of Glencoe, Napoleon, Ky.



H. R. LITTELL.\*

Lawyer; Former President City Bank; Former Auditor and Treasurer, Hopkinsville, Ky.

\*Died 1894.



S. N. LEONARD.

Manufacturer and Banker; President Suwanee Spoke and Lumber Co., Kuttawa, Ky.; President Farmers' Bank, Eddyville, Ky.



## BANKERS.



J. M. McCUTCHEON.

Banker and Merchant; President Bank of  
Russellville, Russellville, Ky.



JOHN W. CALDWELL.

Lawyer; Col. Ninth Ky. Inf., C. S. A.; Com-  
manded Orphans' Brigade part of 1863-64-65;  
Judge Logan Co., 1866-74; Member Forty-  
fifth, Forty-sixth and Forty-seventh  
Congress from Third Ky. Dist.; Pres.  
Logan Co. Bank, Russellville, Ky.



JOHN M. WHITE.

Farmer and Undertaker; President Farmers' De-  
posit Bank, Horse Cave, Ky.



E. DICKEY.

President People's Bank, Cave City, Ky.

## BANKERS.



J. BUFORD HENDRICK.  
President Deposit Bank, Frankfort, Ky.



R. N. WATHEN.  
President Farmers' National Bank; Former State Senator and of Wathen, Mueller & Co., and Mueller, Wathen & Kobart, Distillers, Lebanon, Ky.



F. S. ALLEN.  
President Exchange Bank; born in Sharpsburg, 1850; has been Cashier and President of above bank since January 1, 1868.  
Sharpsburg, Ky.



I. W. KELLY, B. S.  
Graduate Georgetown College; Farmer and Business Man; Theologian and Scholar; Author of the Mathematics, Key to the Scriptures; President Bank of New Castle, New Castle, Ky.

## BANKERS.



J. E. POTTER.

President P. J. Potter's Sons, Bankers, Bowling Green, Ky.



W. A. SEARS.

For thirty-four years connected with the banking house known as W. A. Sears & Co.'s Private Bank, Nicholasville, Ky.



J. WHIT POTTER.

Manager Potter-Matlock & Co., Bankers; President Southern Educational Building Co., Bowling Green, Ky.



WILLIAM J. POTTER.

Cashier P. J. Potter's Sons, Bankers, Bowling Green, Ky.

## TRUST COMPANIES.



JOHN STITES,  
President Fidelity Trust & Safety Vault Co.,  
Louisville, Ky.



JOHN W. BARR, JR.  
Vice-President Fidelity Trust & Safety Vault Co.,  
Louisville, Ky.



JOHN T. MALONE,  
Second Vice-President Fidelity Trust & Safety  
Vault Co., Louisville, Ky.



J. C. MAHON,  
Secretary Fidelity Trust & Safety Vault Co.,  
Louisville, Ky.

## TRUST COMPANIES.



ATTILLA COX.

President Columbia Finance & Trust Co.; President Louisville, Henderson & St. Louis Ry. Co., Louisville, Ky.



HENRY V. SANDERS.

Treasurer Columbia Finance & Trust Co., Louisville, Ky.



TREVOR H. WHAYNE.

Superintendent Real Estate Department Fidelity Trust & Safety Vault Co., Louisville, Ky.



J. LITIGOW SMITH.

Superintendent Real Estate Department Columbia Finance & Trust Co., Louisville, Ky.

## TRUST COMPANIES, SAVING BANKS AND TITLE COMPANIES.



HECTOR V. LOVING.

President Louisville Trust Co., Louisville, Ky.



EMBURY L. SWEARINGEN.

President Kentucky Title Co. and Kentucky Title Savings Bank, Louisville, Ky.



J. D. POWERS.

Pres. Nat. Trust Co., Louisville; Pres. First Nat.  
Bank, Owensboro; Late Pres. Ky. Bankers'  
Assn.; Member Executive Council Amer.  
Bankers' Assn., Louisville, Ky.



BETHEL B. VEECH.

Vice-President National Trust Co., Louisville;  
Residence Jefferson County, Ky.

## LIFE INSURANCE.



GEO. W. MORRIS.  
President Mutual Life Insurance Co. of Kentucky,  
Louisville, Ky.



H. D. RODMAN.  
General Agent Northwestern Mutual Life Insur-  
ance Co. of Wisconsin, Louisville, Ky.



JAMES B. STEEDMAN, M. D.  
Medical Director Mutual Life Insurance Co. of  
Kentucky, Louisville, Ky.



CHARLES C. EARLY.  
Superintendent Kentucky Department Union Cen-  
tral Life Insurance Co. of Cincinnati, O.,  
Louisville, Ky.

## FIRE INSURANCE.



BRIG.-GEN. JOHN B. CASTLEMAN.

Barbee & Castleman, Insurance Managers; Former Adj. Gen.; Former Colonel First Regt. N. G. of Ky.; Brig.-Gen., Spanish-American War, Louisville, Ky.



BRECKINRIDGE CASTLEMAN.

Fire Insurance Manager, Barbee & Castleman, Louisville, Ky.



GEORGE L. DANFORTH.

Of J. L. Danforth & Co., General Insurance Agents, Louisville, Ky.



JAMES W. POWELL.

Fire Insurance Adjuster, with Royal Insurance Co., Barbee & Castleman, Managers; Col. on staff of Gen. J. C. W. Beckham; Member Board of Trade, Louisville, Ky.



LIFE AND FIRE INSURANCE.



GRIFFIN P. THEOBALD.

Fire and Tornado Insurance Agent; Veteran Mexican War; Major Confederate Army, Louisville, Ky.



ALFRED PIRTLE.

Fire Insurance Agent; Veteran Union Army; Author of "Battle of Tippecanoe," Louisville, Ky.



THOS. C. TIMBERLAKE.

Fire Insurance; Secretary Salvage Corps, Louisville, Ky.



CHARLES W. DORSEY.

Manager of Kentucky & Tennessee, United States Life Insurance Co., Louisville, Ky.

## LIFE INSURANCE.



BISCOE HINDMAN.

Gen. Agent Mut. Life Ins. Co. of N. Y. for Ky.  
& Tenn.; Com. Gen. U. S. C. V., 1900-1901,  
Louisville, Ky.



JOHN B. PIRTLE.

State Agent Travelers' Insurance Co., Louis-  
ville, Ky.



FRANK L. MCKERNAN.

General Agent National Life Insurance Co. of  
Vermont, Louisville, Ky.



H. P. REAGER.

Manager Germania Life Insurance Co. of New  
York, Louisville, Ky.

## LIFE, SICK AND ACCIDENT INSURANCE.



JOHN CALDWELL DAVIDSON.

General Agent Aetna Life Insurance Co. of Hartford, Conn., Louisville, Ky.



J. G. A. BOYD.

Manager Dept. Eastern Ky. Prod. Ins. Co. of Amer.; First Vice-Pres. Louisville Commercial Club, Louisville, Ky.



C. S. DRAKE.

Superintendent National Sick and Accident Association, Louisville, Ky.



WILLETT C. TRABUE.

Lawyer; General Agent for Cent. Ky. Penn Mut. Life Ins. Co. of Phila., Pa., Louisville, Ky.

## CASUALTY, INDEMNITY AND GENERAL INSURANCE.



CHARLES L. NELSON.

Resident Manager Kentucky, Tennessee and Southern Indiana of the Fidelity & Casualty Co. of New York, Louisville, Ky.



WILLIS S. MULLEN.

General Agent and Attorney in Fact, Fidelity & Deposit Co. of Maryland, Louisville, Ky.



CLAUDE D. MOODY.

General Agent American Credit Indemnity Co. of New York, Louisville and Pewee Valley, Ky.



T. LOGAN HOCKER.

General Insurance and Brokerage, Lexington, Ky.

REAL ESTATE.



HANCOCK TAYLOR.

Real Estate Agent, Farms and Suburban Property a Specialty; Native of Jefferson County, Ky.; Four years in Confederate Army, Louisville, Ky.



JOHN A. STRATTON.

John A. Stratton & Co., Real Estate Agents, Louisville, Ky.



BRUCE HOBLITZELL.

Real Estate Broker, Louisville, Ky.



ORLAND S. KLINE.

Or O. S. Kline & Co., Real Estate and Financial Agents, Louisville, Ky.

## REAL ESTATE.



WALTER S. ADAMS.

Real Estate and Financial Broker; projected large investment properties; financed the consolidation of the brick companies known as the Hydraulic Brick Co., Louisville, Ky.



JUNIUS CALDWELL.

Of Hardy Burton & Co., Real Estate Agents and Auctioneers, Louisville, Ky.



CLARENCE R. GARDINER.

Real Estate Broker, Louisville, Ky.



WILLIAM A. MERIWETHER.

Real Estate Broker; Secretary and Treasurer Highland Park Land Co., Louisville, Ky.

## REAL ESTATE.



EDWARD F. METZNER.  
Real Estate Broker, Louisville, Ky.



ALEXIS F. STEBER.  
Of A. F. Steber & Co., Real Estate and Loans,  
Louisville, Ky.



CHARLES KAVANAUGH OLDHAM.  
Real Estate Broker; Promoter Chautauqua Woods  
and Arlington Heights Additions, Lex-  
ington, Ky.



WILLIAM A. BAKER.  
Of William A. Baker & Co., Real Estate Brokers  
and Loan Agents, Louisville, Ky.

## REAL ESTATE.



JAMES E. BELL.

President Bell & Coggeshall, Real Estate Promoters, Louisville, Ky.



JAMES M. RAINS.

Real Estate Agent; Superintendent Lebanon Water Works Co. since 1893, Lebanon, Ky.



W. R. R. LA VIELLE.

Secretary Louisville Public Warehouse, Louisville, Ky.



W. N. COX.

President Louisville Public Warehouse, Louisville, Ky.



## CIVIL, SANITARY AND ELECTRICAL ENGINEERS.



CHARLES HERMANY.

Civil Engineer; Chief Engineer and Superintendent Louisville Water Co., Louisville, Ky.



W. B. GRAY.

Sanitary Engineer;  
Author and Trade Journalist,  
Louisville, Ky.



HARRY I. WOOD.

Electrical Engineer and Contractor, Louisville, Ky.



JAMES CLARK, JR.

Of James Clark, Jr., & Co., Merchant and Manufacturer of Electrical Supplies and Machinery, Louisville, Ky.

## RAILROADS AND STEAMBOATS.



T. J. MINARY.

President Louisville Railway Co., Louisville, Ky.



BUSHROD W. TAYLOR.

Superintendent P., C., C. &amp; St. L. R. R., Louisville, Ky.



GEORGE B. HARPER.

General Superintendent Frankfort & Cincinnati  
Railway, Louisville, Ky.

W. W. HITE.

President L. & E. Mail Co., L. & J. Ferry Co.,  
and of W. W. Hite & Co.; Vice-President  
Louisville & Cincinnati Packet  
Co., Louisville, Ky.

## STEAMBOATS.



GEORGE H. WILSON.  
Superintendent Louisville & Evansville Mail Line,  
Louisville, Ky.



CHARLES V. WILLIAMS.  
General Freight Agent Louisville & Evansville  
Mail Line, Louisville, Ky.



CAPT. FRANCIS M. RYAN.  
Master Steamer "Morning Star," Louisville &  
Evansville Mail Line, Louisville, Ky.



CAPT. R. H. BALLARD.  
Master Louisville & Evansville Mail Line, Louis-  
ville, Ky.

## STEAMBOATS.



CHARLES C. FULLER.

Master Louisville & Cincinnati Packet Co.; Member Board of Trade and Commercial Club, Louisville, Ky.



CAPT. JOHN BRENNEN.

Master "City of Louisville" and Louisville & Evansville Packet Co.; Knight Templar, Covington, Ky.



CAPT. FREDERICK ZOLL.

Master Louisville & Evansville Mail Line, Louisville, Ky.



JEFFERSON THOMAS.

Pilot "City of Cincinnati," Louisville & Cincinnati Packet Co.; Former United States Harbor Master, Steam Vessels, Louisville, Ky.

## ARCHITECTS.



WILLIAM J. DODD.

Of Dodd &amp; Cobb, Architects, Louisville, Ky.

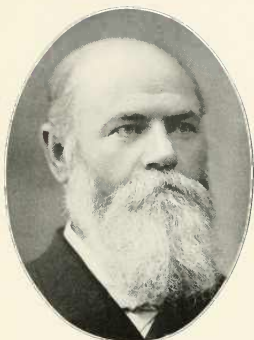


ARTHUR COBB.

Of Dodd &amp; Cobb, Architects, Louisville, Ky.

HENRY WOLTERS.  
Architect, Louisville, Ky.JOHN BACON HUTCHINGS.  
Architect, Louisville, Ky.

## ARCHITECTS AND BUILDERS.



JACOB F. MERIWETHER.  
Contractor and Builder, Louisville, Ky.



GUSTAV N. LORTZ.  
Contractor and Builder, Louisville, Ky.



EDWARD D. FITCHNER.  
Of John Fitchner & Son, Builders, Louisville, Ky.



J. W. CONNOR.  
Builder and Contractor, Louisville, Ky.

## PHOTO-ENGRAVERS, ELECTROTYPERS AND INVENTORS.



FRANK P. BUSH.

Secretary and Treasurer Heybach-Bush Co.,  
Photo-Engravers; Makers of Half Tones  
in this book; Member of Board of  
Trade, Louisville, Ky.



THOS. D. BARR.

Superintendent Heybach-Bush Co., Photo-Engravers;  
Makers of Half Tones in this book;  
Louisville, Ky.



J. KIRK ROWELL.

Photo-Engraver; Electrotypers; Material  
Louisville, Ky.



WILLIAM G. RAU.

Inventor and Manufacturer, Louisville, Ky.

## DECORATORS, WALL PAPER, PAINTERS' SUPPLIES.



CHARLES M. SNYDER.

President and Manager Louisville Interior Decorating Co., Inc., Importers, Jobbers and Retailers of Wall Papers, Louisville, Ky.



ARTHUR B. COOK.

Treasurer Louisville Interior Decorating Co., Inc., Importers, Jobbers and Retailers of Wall Papers, Louisville, Ky.



WILLIAM B. PELL.

Of W. B. Pell & Bro., Contracting Painters, Decorators and Hardwood Finishers, Louisville, Ky.



EDWARD H. MARCUS.

Window Glass and Painters' Supplies, Louisville, Ky.



CAR. BUILDER, CONTRACTORS, PLASTERER, PLUMBERS.



J. H. SANAMAN.  
Car Builder and Contractor, Louisville, Ky.



WILLIAM P. BANNON.  
Contracting Plasterer and Proprietor Standard  
Wall Mortar Co., Louisville, Ky.



SIMON SHULHAFFER.  
Plumber and Sanitary Engineer, Member B. P.  
O. Elks, Louisville, Ky.



BENJAMIN B. WATTS.  
Master Plumber, Louisville, Ky.

## MANUFACTURERS.

STOVES, GRATES, ETC.



JAMES S. LITHGOW.\*

Mayor of Louisville 1865; President Lithgow Manufacturing Co., Stove Manufacturers, Louisville, Ky.

\*Died February 21, 1902.



GEORGE F. DOWNS.

Retired Manufacturer and Merchant, late of firm of Mark & Downs; in eighty-ninth year, Louisville, Ky.



CHARLES C. PFEIFER.

President of the Fischer-Lea Co. Manufacturers of Grates and Stoves, Louisville, Ky.



P. GALT MILLER.

President Bridgeford & Co., Stove Foundry, etc., Louisville, Ky.

**MANUFACTURERS.**

PLOWS, CEMENT, ELEVATORS.

**JAMES EDWARD HARDY.**

Vice President Brinly-Hardy Co., Plow Manufacturers; Chairman Ky. State Exec. Com. Y. M. C. A. from organization to present time, Louisville, Ky.

**JOHN L. WHEAT.**

Sec. and Treas. Union Cement & Lime Co. and Utica Lime Co.; Vice-Pres. Masonic Widows' and Orphans' Home; Ky. State Y. M. C. A. Organization; Pres. Lou. and Vicinity Bible Soc.; East. Cemetery Co., Louisville, Ky.

**ABRAHAM G. MUNN.**

President Southwestern Agricultural Works, Louisville, Ky.

**WILLIAM E. KOOP.**

President of the Geiger, Fiske & Koop Co., Elevator Manufacturers, Louisville, Ky.

## MANUFACTURERS.

PLOWS.



GEORGE C. AVERY.

President B. F. Avery & Sons, Plow Manufacturers, Louisville, Ky.



CHARLES F. HUHLEIN.

General Manager B. F. Avery & Sons, Plow Manufacturers, Louisville, Ky.



THOMAS E. C. BRINLY.

President Brinly-Hardy Co., Plow Manufacturers, Louisville, Ky.



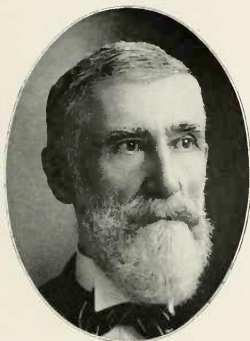
JOHN L. BRINLY.

Superintendent Brinly-Hardy Co., Plow Manufacturers, Louisville, Ky.

Digitized by Microfilm

## MANUFACTURERS.

IRON, NAILS, WIRE.



JNO. J. SLATTERY.

President The Todd-Donigan Iron Co., Louisville, Ky.



JOHN COCHRAN.

Secretary and Treasurer The Todd-Donigan Iron Co., Louisville, Ky.

IRON PIPE, BATH TUBS, BRASS.



GEORGE J. LONG.

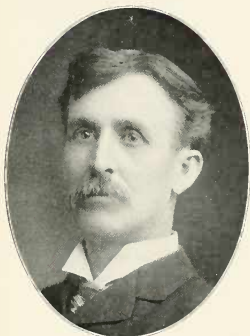
Resident Manager Louisville Branch United States  
Cast Iron Pipe & Foundry Co., Louisville, Ky.

THEODORE AHRENS, SR.

Founder Ahrens & Ott Manufacturing Co., Bath  
Tubs, Brass Goods, Plumbers' Supplies,  
etc., Louisville, Ky.

## MANUFACTURERS.

IRON, STEEL, PIG IRON.



ANDREW G. WHITLEY.

President Fulton, Conway & Co., Iron, Steel,  
Heavy Hardware, Blacksmith and Carriage  
Material and Tools; Manufacturers Wagon  
Wood Work, Louisville, Ky.



RICHARD BAYLOR HICKMAN.

Of Hickman, Williams & Co., Merchants and  
Manufacturers of Pig Iron, Chicago, St.  
Louis, Louisville, Ky.



WILLIS P. DAVIS.

Davis, Kelly & Co., Manufacturers Pig Iron and  
Steel, Louisville, Ky.



ROBERT M. KELLY, JR.

Davis, Kelly & Co., Manufacturers Pig Iron and  
Steel, Louisville, Ky.

## MANUFACTURERS.

HENRY VOGT MACHINE CO



HENRY VOGT.

President Henry Vogt Machine Co., Manufacturers  
of Ice Machines, Boilers, etc.; Knight Templar  
and Scottish Rite Mason, Louisville, Ky.



ADAM VOGT.

Secretary and Treasurer Henry Vogt Machine Co.,  
Manufacturers of Ice Machines, Boilers, etc.,  
Knight Templar and Scottish Rite Mason.  
Louisville, Ky.

## AMERICAN MACHINE CO.



JOHN G. DAEUBLE.

President American Machine Co., Louisville, Ky.



F. WM. DAEUBLE.

Secretary and Treasurer American Machine Co.,  
Louisville, Ky.

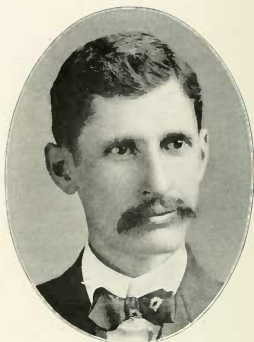
## MANUFACTURERS.

IRON FOUNDER, SAWS, WHEELS, MACHINES.



ROGER D. WILLIAMS.

Iron Founder; Colonel Commanding Second Regiment Kentucky Infantry, Lexington, Ky.



LOGAN L. MATHER.

Manager Henry Disston & Sons, Saw Manufacturers, Louisville, Ky.



L. J. WARDEN.

Secretary Brown-Colburn Machine Co., Bowling Green, Ky.



JOSEPH S. COLEMAN.

Manager Royer Wheel Co., Lebanon, Ky.



## MANUFACTURERS.

CLOTHING.



PRESLEY H. TAPP.

President Tapp, Leathers & Co., Clothing Manufacturers; native of Alabama; began business 1857, Louisville, Ky.



JAS. M. S. BEAVERS.

Superintendent Tapp, Leathers & Co., Clothing Manufacturers, Louisville, Ky.



MARK R. HARNED.

Senior Member Harned Bros., General Merchants, Caneyville, Ky.; President Louisville Clothing Co., Louisville, Ky.



FRANK J. HEALINE.

Superintendent Van B. Nelson Clothing Co., Louisville, Ky.

## MANUFACTURERS.

JEANS CLOTHING, WOOLEN.



ANTHONY V. THOMSON.

President Kentucky Jeans Clothing Co., Louisville, Ky.



CHARLES MENDEL.

Vice-President Kentucky Jeans Clothing Co., Louisville, Ky.



HARDIN WILSON.

Secretary and Treasurer Kentucky Jeans Clothing Co., Louisville, Ky.



ROLAND L. WHITNEY.

Secretary and Treasurer Falls City Jeans &amp; Woolen Mills Co., Louisville, Ky.

**MANUFACTURERS.**

WAGONS, CARRIAGES.



**WILLIAM C. NONES.**  
President Kentucky Wagon Manufacturing Co.,  
Louisville, Ky.



**SETH M. NONES.**  
Secretary Kentucky Wagon Manufacturing Co.,  
Louisville, Ky.



**FRED. O. NUETZEL.**  
Manager Ruby Carriage Co.; Treasurer Liederkranz Society; Exalted Ruler B. P. O. Elks;  
Member Willis Stewart Lodge 24 F. A. M.  
Louisville, Ky.



**THOMAS H. RUBEL.**  
Carriage Manufacturer; Former Member Board  
of Aldermen, Louisville, Ky.

## MANUFACTURERS.

SADDLERY, HOUSE FURNISHINGS.



JOHN J. HARBISON.

President Harbison & Gathright, Inc., Merchants  
and Manufacturers of Saddlery, etc.,  
Louisville, Ky.



JOSIAH B. GATHRIGHT.

Vice-President Harbison & Gathright, Inc., Mer-  
chants and Manufacturers of Saddlery, etc.,  
Louisville, Ky.



OWEN GATHRIGHT.

Second Vice-Pres. and Treas. Harbison & Gath-  
right Co., Inc.; Pres. Lon. Y. M. C. A.; Ky.  
Mem. Int. Com. Y. M. C. A.; Mem. and Ex.  
Dir. Board of Trade; Mem. and Ex-Pres.  
Commercial Club; Ex-Pres. Whol.  
Sad. Assn. U. S. A.; Treas. Lon.  
Charity Assn., Louisville, Ky.



HENRY TERSTEGGE.

Of Stratton & Terstegge, Manufacturers of House  
Furnishings; and of Terstegge, Gohmann &  
Co., New Albany, Ind., Louisville, Ky.

## MANUFACTURERS.

BOXES, LUMBER, SAW MILL, COOPERS.



CHARLES C. MENGEL, JR.

Former Colonel First Regt. N. G. of Ky.; President Mengel Box Co. and of C. C. Mengel, Jr., & Bro. Co., Lumber and Saw Mill; President Board of Trade, 1888-99, Louisville, Ky.



CLARENCE R. MENGEL.

Secretary and Treasurer C. C. Mengel, Jr., & Bro. Co. Lumber, Saw and Planing Mills; Member Board of Trade, Louisville, Ky.



PHILIP SENDEL.

Proprietor Gambrinus Cooperage Works, Chip Casks, Tanks, etc., Louisville, Ky.



MICHAEL J. MEEHAN.

President The Bergen & Meehan Co., Whisky Staves and Heading and Cooperage for Export, Louisville, Ky.

## MANUFACTURERS.

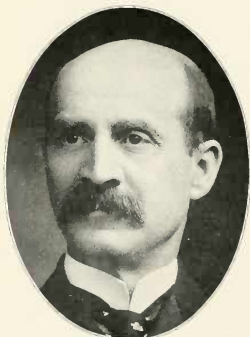
TOBACCO.



CHARLES C. VOGT.

Resident Manager John Finzer Branch Continental  
Tobacco Co., Louisville, Ky.

RUDOLPH F. VOGT.

President of Hummel & Vogt Co., Cigar Manu-  
facturers, Louisville, Ky.

HENRY STRATER.

President Strater Brothers Tobacco Co., Strater  
Bros., Grain, Louisville, Ky.

WILLIAM E. STRATER.

Secretary and Treasurer Strater Brothers To-  
bacco Co., Louisville, Ky.

**MANUFACTURERS.**

CIGARS, STORE FIXTURES.



**J. A. LANCASTER.**

Of firm of J. A. Lancaster & Co., Cigar Manufacturers, Louisville, Ky.



**ROBERT MANSFELD.**

Of R. Mansfeld & Son, Manufacturers of Bank, Office and Store Fixtures, Louisville, Ky.

GAS MACHINES, BROOMS, MATTRESSES.



**HYMAN OFFUTT.**

Manufacturer of Acetylene Gas Machines, Louisville, Ky.



**THOMAS C. CAUMMISAR.**

Manufacturer of Brooms, Excelsior, Staves, Split Baskets, Mattresses, etc., Louisville, Ky.

## MANUFACTURERS.

CHEWING GUM, CANDY, PICKLES, PRESERVES.



THOMAS L. JEFFERSON.

Manager American Chicle Co.; Kis-Me Gum Factory; Dir. Sou. Nat. Bank; Nat. Trust Co.; Pres. Masonic Widows' and Orphans' Home, Louisville, Ky.



FRANK A. MENNE.

President Frank A. Menne Candy Co., Louisville, Ky.



WALLACE G. MILLER.

Secretary and Treasurer Hyman Pickle Co., Louisville, Ky.



EDWARD L. GOODWIN.

Proprietor Goodwin Preserving Co., Louisville, Ky.



## MANUFACTURERS.

CAR COMPANY, MILL COMPANY.



JACOB L. SMYSER.

President Ohio Falls Car Manufacturing Co.,  
Louisville, Ky.

FREDERICK W. HARDWICK.

Secretary and Treasurer W. T. Prye Mill & Sup-  
ply Co. Louisville, Ky.

REFINERY, SOAP, OIL.



EDWIN H. FERGUSON.

President Kentucky Refining Co. and Louisville  
Soap Co., Louisville, Ky.

JAMES W. RUGGLES.

Born and raised in Lewis Co., Ky.; attended Ky.  
Wesleyan College; taught in Public Schools  
1890-1896; Candidate County School Supt.  
in 1897; representing Standard Oil Co.,  
Vanceburg, Ky.

## MANUFACTURERS.

MONUMENTS, ARTIFICIAL STONE, DYNAMITE.



MICHAEL MULDOON.

Muldoon Monument Co., Louisville, Ky.



JAMES S. CLARK.

President J. S. Clark Monument Co., Louisville, Ky.



ALBERT S. ROBERTSON.

President Falls City Artificial Stone Co., stone work in all its branches, owners of Palmers' Concrete Building Block, Louisville, Ky.



ALEX. L. SEMPLE.

Of firm Alex. L. Semple &amp; Co., Dynamite Explosives, Louisville, Ky.

MANUFACTURERS.

COTTON, OX BREECHES, TANNERS.



ED. W. CHAMBERLAIN.  
Treasurer Indiana Cotton Mills (Cannelton, Ind.),  
Louisville, Ky.



GEORGE G. SUMMERS.  
Secretary and Treasurer Ox Breeches Manufact-  
uring Co., Louisville, Ky.



THEOPHILE CONRAD.  
President Conrad Tanning Co. Louisville, Ky.

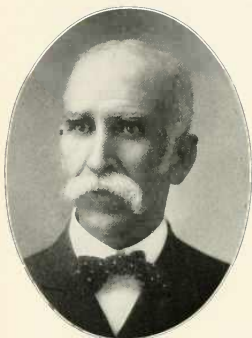


JOHN F. C. HEGEWALD.  
Secretary Conrad Tanning Co. Louisville, Ky.

Digitized by Microfilm

## MANUFACTURERS.

THE J. W. ZARING GRAIN AND MILL COMPANY



J. W. ZARING.

President J. W. Zaring Grain &amp; Mill Co., Richmond, Ky.



ALLEN H. ZARING.

Secretary and Treasurer J. W. Zaring Grain &amp; Mill Co., Richmond, Ky.

ICE, LIGHT, POWER.



T. M. ESTES.

President Lebanon Light, Ice &amp; Power Co., and breeder of standard bred trotting horses, Lebanon, Ky.



MATHIAS POSCHINGER.

President New Albany Ice Co.; Proprietor Louisville Ice Co., Louisville, Ky.

MANUFACTURERS, MERCHANTS.

MEDICINES, PAINTS, OILS, VARNISHES.



ROBERT ARTHUR PETER.

Of R. A. Peter & Co., Proprietary Medicines,  
Louisville, Ky.



STUART McDOWELL.

President Bridges-McDowell Co.; Secretary Ohio  
Falls Varnish Co., Louisville, Ky.



HENRY S. RAMEY.

President Lampton, Crane & Ramey Co.; Vice-  
President Sterling Paint & Color Co., Louis-  
ville, Ky.



WILLIAM F. CRANE.

President Sterling Paint & Color Co.; Vice-Pres-  
ident Lampton, Crane & Ramey Co., Louis-  
ville, Ky.

## MERCHANTS.

JEWELRY, DIAMOND SETTER, SURGICAL INSTRUMENTS



WM. C. KENDRICK.

Senior Member Wm. Kendrick's Sons, the leading jewelers, established 1832, Louisville, Ky.



GEORGE P. KENDRICK.

Junior Member Wm. Kendrick's Sons, the leading jewelers, established 1832, Louisville, Ky.



WILLIAM G. BUSCHMEYER.

Manufacturing Jeweler and Diamond Setter, Louisville, Ky.



BROOKS DENHARD.

Manager W. T. Berry Surgical Instrument Co., Louisville, Ky.

## MERCHANTS.

DRY GOODS, BOOTS AND SHOES.



CHARLES BONNYCASTLE ROBINSON.

President Robinson-Hughes Co., Dry Goods, Commission; President Beargrass Woolen Mills; Director Ohio Falls Dye Works; Trustee and Treasurer Town of Anchorage, Ky.



WILLIAM MEADE ROBINSON.

Vice-President Robinson-Hughes, Dry Goods Commission; Vice President Beargrass Woolen Mills; President Allmentol Co.; Director Ohio Falls Dye Works, Louisville, Ky.



JOHN C. HUGHES.

Sec. and Treas. Robinson-Hughes Co. and Beargrass Woolen Mills; Director Ky. Wagon Works Am. Nat. Bank, Ohio Falls Dye Works and Board of Trade, Louisville, Ky.



MANUEL J. STRENG.

Of Streng & Thalheimer, Wholesale Boots and Shoes Louisville, Ky.

## MERCHANTS.

J. M. ROBINSON-NORTON &amp; CO., DRY GOODS.



GEORGE C. NORTON.

J. M. Robinson, Norton &amp; Co., Wholesale Dry Goods, Louisville, Ky.



GARLAND H. MOURNING.

J. M. Robinson, Norton &amp; Co., Wholesale Dry Goods, Louisville, Ky.



DOUGLAS BARCLAY.

J. M. Robinson, Norton &amp; Co., Wholesale Dry Goods, Louisville, Ky.



ALVAH H. TERRY.

J. M. Robinson, Norton &amp; Co., Manager Notion Department, Louisville, Ky.



## MERCHANTS.

J. M. ROBINSON-NORTON &amp; CO.--JOHN C. LEWIS CO., DRY GOODS.



WILLIAM H. MOURNING.

J. M. Robinson, Norton & Co., Wholesale Dry Goods; Member Commercial Club, B. P. O. Elks No. 8, Board of Trade, Royal Arcanum, T. P. A., etc., Louisville, Ky.



CHARLES B. NORTON.

J. M. Robinson, Norton & Co., Wholesale Dry Goods; Director Board of Trade; President Commercial Club; Member Royal Arcanum, B. P. O. Elks No. 8, T. P. A., etc., Louisville, Ky.



ALEXANDER G. ROBINSON.

J. M. Robinson, Norton & Co., Wholesale Dry Goods; Member Commercial Club, Board of Trade, B. P. O. Elks No. 8, K. A. E. O., etc., Louisville, Ky.

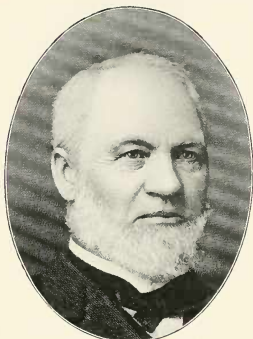


JOHN C. LEWIS.

President John C. Lewis Co., Dry Goods, etc., Department Store, Louisville, Ky.

## MERCHANTS.

CARTER DRY GOODS COMPANY.



JOHN A. CARTER.\*

Founder of the Carter Dry Goods Co., Louisville, Ky.

\*Died March 16, 1894.



JOSEPH C. BETHEL.

President Carter Dry Goods Co.; Capt. Co. A,  
Fourth Ky. Inf. (Orphans' Brigade), C. S. A.,  
Louisville, Ky.



HARRY DUMESNIL.

Treasurer Carter Dry Goods Co., Louisville, Ky.



EDWARD ROWLAND.

Vice-President Carter Dry Goods, Co.; born in  
Mobile, Ala.; came to Louisville in 1863,  
Louisville, Ky.

## MERCHANTS.

CARTER DRY GOODS COMPANY.



WILLIAM H. BRADBURY.

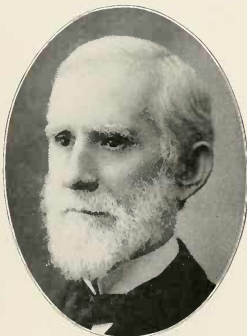
Secretary Carter Dry Goods Co.; born in New York; came to Louisville in 1879; in present business since 1880, Louisville, Ky.



EDWARD B. CLARK.

Second Vice-President Carter Dry Goods Co., Louisville, Ky.

MILLINERY CARPETS, ETC.



WILLIAM H. MCKNIGHT.

Senior Member of W. H. McKnight Sons & Co., Carpets, Oil Cloth, etc.; Member Board of Trade; President New Galt House; Member Board of Directors Polytechnic Society, Louisville, Ky.



WILLIAM J. BAIRD.

Of David Baird & Son, Wholesale Millinery, Louisville, Ky.

## MERCHANTS.

DRY GOODS CARPETS, UMBRELLAS, ETC.



G. E. WISEMAN.

Welsh & Wiseman Co., Merchants, Dry Goods,  
Carpets, etc., Danville, Ky.



A. B. ROBERTSON.

Of A. B. Robertson & Bro., Merchants, Dry  
Goods, etc., Danville, Ky.



GEORGE CROSS.

The Original George Cross; Umbrellas, Parasols,  
Gloves and Corsets; the pioneer umbrella  
store of Louisville, Ky.



GEORGE E. CROSS.

Umbrellas, Parasols, Gloves, Corsets, Fans, etc.,  
Louisville, Ky.

## MERCHANTS.

WHOLESALE FLOUR, SALT, CEMENT, LIME.



HENRY T. JEFFERSON.

Of the firm of Jefferson & Co., Wholesale Flour,  
Salt, etc.; Grand Commander Knights Tem-  
plar of Kentucky, Louisville, Ky.



JAMES B. SPEED.

J. B. Speed & Co., Salt, cement, Lime, etc.,  
Louisville, Ky.

HATS, SHOES



W. J. ABRAM.

President Swann-Abram Hat Co., Louisville, Ky.



A. J. CALDWELL.

Shoe Merchant, Danville, Ky.

## MERCHANTS.

R. A. ROBINSON'S SONS.



RICHARD ALEXANDER ROBINSON, SR.\*

Born Oct. 23, 1817; Founder Robinson-Pettet Co. 1842; Founder Robinson Bros. & Co., 1878; Pres. 1872-1897, Union Cement & Lime Co.; First Pres., 1872-1897, Louisville Woolen Mills; Louisville Board of Trade, First Honorary Life Member, 1881; Director Louisville & Nashville Railroad Co., 1865 and 1868-72; one of original Projectors and Directors of Elizabethtown & Paducah Railroad Co.; Director Louisville Bridge Co., 1867 to 1871, Louisville, Ky.  
\*Died December 9, 1897.



WILLIAM ALEXANDER ROBINSON.

Director Robinson-Pettet Co.; Pres., 1891-2, Nat. Wholesale Druggists' Assn.; Pres. Union Cement & Lime Co.; Director R. A. Robinson's Sons; Director Louisville Cotton Mills Co., First Pres. 1888-1890; Director Louisville Woolen Mills; Director Board of Trade, First Vice-Pres. 1881-4; Chairman Exec. Com., 1882-4; Honorary Life Member, 1898, Louisville Commercial Club, Louisville, Ky.



WORTHINGTON ROBINSON.

Director Robinson-Pettet Co., Wholesale Druggists; Director R. A. Robinson's Sons, Louisville, Ky.



CHARLES P. ROBINSON.

President Robinson Bros. Co., Wholesale Hardware, Louisville, Ky.

## MERCHANTS.

R. A. ROBINSON'S SONS.



R. A. ROBINSON.

Vice-President Robinson Bros. Co., Wholesale  
Hardware; President R. A. Robinson's  
Sons, Louisville, Ky.



GEORGE A. ROBINSON.

General Manager Louisville Woolen Mills; Vice-  
President R. A. Robinson's Sons; the First  
President of Louisville Commercial Club;  
the First Honorary Life Member of  
Commercial Club, Louisville, Ky.



ARCH. M. ROBINSON.

Secretary and Treasurer Louisville Woolen Mills,  
Louisville, Ky.



A. LEE ROBINSON.

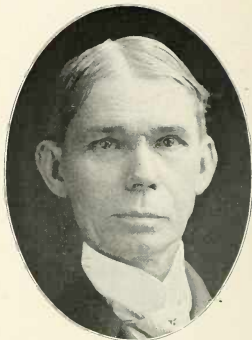
Vice-President Robinson-Pettet Co.; Secretary R.  
A. Robinson's Sons, Inc.; Director Louis-  
ville Board of Trade, Louisville, Ky.

## MERCHANTS.

WHOLESALE DRUGS.



CHARLES H. PETTET.  
President Robinson-Pettet Co., Wholesale Drugs,  
Louisville, Ky.



ORLANDO C. RICHARDSON.  
Secretary Neat-Richardson Drug Co.; Former  
Judge Meade County Court; Master Degree  
Mason; Member Filson Club, Louis-  
ville, Ky.

## CLOTHING---FURNISHING GOODS.



HENRY LEVY.  
Levy Bros., Clothing, Hats, Shoes and Furnish-  
ing Goods, Louisville, Ky.



S. C. HEDDEN.  
Clothing, President Commercial Club, Shelby-  
ville, Ky.



**MERCHANTS.**

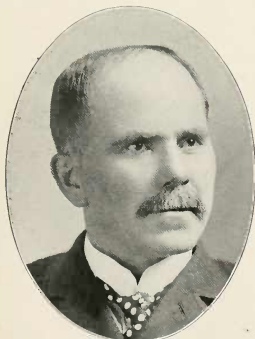
GRAIN---ELEVATOR---COAL.



**CHARLES G. STRATER.**  
Of Strater Bros., Grain, Louisville, Ky.



**FRANK C. DICKSON.**  
Vice-President Kentucky Public Grain Elevator  
Co., Louisville, Ky.



**WILLIAM H. SLAUGHTER, JR.**  
Miner and Shipper of Coal and Coke, Wholesale  
and Retail Dealer in Coal, Louisville, Ky.



**CHARLES L. CRUSS.**  
Manager Pacific Coal Co., Louisville, Ky.

## MERCHANTS.

WHOLESALE FURNITURE---LUMBER.



JOHN BENNETT.

Wholesale Furniture, Louisville, Ky.



DILLER BENNETT.

Wholesale Furniture; the youngest wholesale merchant in Louisville, Ky.



CALVIN F. THOMAS.

Lumber Contractor and Builder, Louisville, Ky.

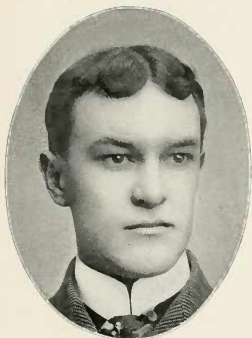


HENRY KOEHLER.

Of Firm of Henry Koehler & Co., Lumber, Doors, Sash, Blinds, Mouldings, Louisville, Ky.

**MERCHANTS.**

LUMBER---ICE.

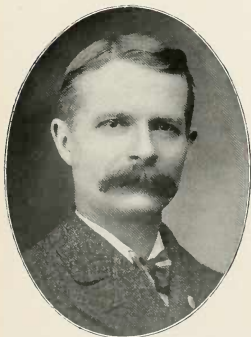


**HUGHES MOORE.**  
Wholesale Lumber, Louisville, Ky.



**JOHN ROHBMAN.**  
Ice Dealer; Member of Masonic, Odd Fellows and  
Red Men Orders and B. P. O. Elks, Louis-  
ville, Ky.

DYER AND CLEANER---TOWEL SUPPLY.



**HENRY A. J. PULS.**  
Dyer and Cleaner, Louisville, Ky.



**F. W. SCHOPPENHORST.**  
Manager Louisville Towel Supply Co., Louis-  
ville, Ky.

## MERCHANT TAILORS.



GEORGE FRITSCHNER.

Of Firm of George Fritschner & Co., Merchant  
Tailors, Louisville, Ky.



MARTIN J. WINN.

Maker of Gentlemen's Garments, Louisville, Ky.



EDWARD A. GUILFOYLE.

Of Firm of Guilfoyle & Simons, Merchant Tailors,  
Manufacturers of High Grade Uniforms,  
Louisville, Ky.



HENRY SCHOENING, JR.

Tailors' Trimmings, Louisville, Ky.

## MUSIC CO.—THEATER MANAGERS.



ANTONIO C. MONTENEGRO.  
President Montenegro-Riehm Music Co., Louis-  
ville, Ky.



JOHN L. RIEHM.  
Secretary and Treasurer Montenegro-Riehm Music  
Co., Louisville, Ky.



WILLIAM H. MEFFERT.  
Theater Proprietor and Manager, Louisville, Ky.



JOHN H. WHALLEN.  
Theater Proprietor and Manager, Louisville, Ky.

## HOTELS.

GALT---LOUISVILLE---WILLARD.



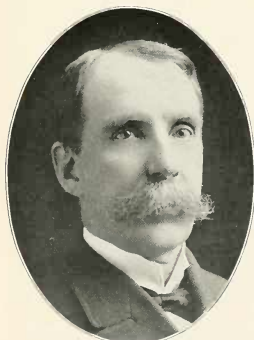
A. R. COOPER.

Secretary, Treasurer and Manager Galt House, the famous hostelry of the South, Louisville, Ky.



GEORGE E. MULLIGAN.

Manager Louisville Hotel; Member Commercial Club, Louisville, Ky.



W. SCOTT MILLER.

Manager Willard Hotel; 25 years in hotel business, beginning at Mammoth Cave, December 3, 1875; took charge of Willard Hotel September, 1892, Louisville, Ky.



DAVID B. MULLIGAN.

Associate Manager Louisville Hotel, Louisville, Ky.

## HOTELS.

SEELBACH---PHOENIX



CHARLES SEELBACH.

Vice-President and Manager Phoenix Hotel,  
Lexington, Ky.



LOUIS SEELBACH.

Proprietor Seelbach Hotel; Member Board of  
Trade and Commercial Club; Vice-President  
Board of Park Commissioners, Louis-  
ville, Ky.



OTTO SEELBACH.

Manager Seelbach Hotel; Member Board of Trade  
and B. P. O. Elks No. 8, Louisville, Ky.



JULIUS C. SEELBACH.

Clerk Seelbach Hotel, Louisville, Ky.

## HOTELS.

FIFTH AVENUE---LELAND---VICTORIA---NORRIS.



PIKE CAMPBELL.

Proprietor Fifth Avenue Hotel; Formerly of Curtin & Campbell, Designers and Builders of the Columbia and John C. Lewis Buildings, Louisville, Ky.



JOHN SKAIN.

Proprietor Leland Hotel; Ex-President City Council; Commissioner Eastern Kentucky Asylum for the Insane, Lexington, Ky.



HARRY MILLER.

Proprietor Victoria Hotel, Louisville, Ky.



S. A. HARDESTY.

Of S. A. Hardesty & Bro., Proprietors Norris House, the leading \$2.00 hotel in Lebanon, Ky.



## BAKERY.



ISAAC F. WHITESIDES.

Former Mayor of Jeffersonville, Ind.; Proprietor  
Whitesides' Bakery, Louisville, Ky.



W. S. WHITESIDES.

Superintendent Whitesides' Bakery, Louis-  
ville, Ky.

## BAKERY AND RESTAURANT.



FRANK ERPELDINGER.

Secretary and Treasurer Vienna Bakery & Res-  
taurant Co., Louisville, Ky.



JULIUS MUENCH.

Proprietor Muench's Bakery & Restaurant; Inner  
Guard No. 8 Elks; Chancellor Commander  
Mystic Lodge K. of P.; Member Com-  
mercial Club, Louisville, Ky.

## CONFECTIONERY, CATERER, RESTAURANT, ICE CREAM.



JOHN W. KLEIN.

Proprietor Klein & Son, Confectioners, Caterers  
and Ladies' Restaurant, Louisville, Ky.



ANTON BUSATH.

Confectioner, manufactures only the very best  
confections, Louisville, Ky.



GEO. W. CUSCADEN.

Proprietor Cuscaden's Wholesale Ice Cream  
Works (factories Louisville, Cincinnati and  
Indianapolis); Member B. P. O. Elks No.  
8, Knights of Honor; Knights and Ladies  
of Honor and Knights and Ladies of  
Security, Louisville, Ky.



THOMAS J. WATHEN.

Ice Cream and Water Ices, Wholesale and Retail,  
Louisville, Ky.

## DISTILLERS.



MARION E. TAYLOR.

Pres. Lou. Board of Trade 1901-2; Pres. Lou. Music  
Festival Assn. 1901-2; Senior Member Wright  
& Taylor, Distillers, Louisville, Ky.



J. W. McCULLOCH.

Distiller, Owensboro, Ky.



SAMUEL GRABFELDER.

Distiller, Louisville, Ky.



HERMAN VOLKERDING.

President Jno. T. Barbee & Co., Distillers, Louis-  
ville, Ky.

## DISTILLERS.



HANS MUELLER.

Of Firm Mueller, Wathen & Kobert, Distillers,  
Lebanon, Ky.



CHARLES KOBERT.

Of Firm Mueller, Wathen & Kobert, Distillers,  
Lebanon, Ky.



J. A. WATHEN.

Supervisor Fermentory Department, Kentucky  
Distilleries & Warehouse Co., Louisville, Ky.



J. B. WATHEN, JR.

Of Firm of R. E. Wathen & Co., Distillers,  
Louisville, Ky.

DISTILLERS.



HENRY A. THIERMAN.\*

President H. A. Thierman Co., Distillers, Louisville, Ky.

\*Died February 15, 1901.



WILLIAM RUEDEMAN.

President Mayflower Distillery Co.; Member Board of Trade, Commercial Club, Masonic Order, etc., Louisville, Ky.



ROBERT P. BONNIE.

Of Bonnie Bros., Distillers, Louisville, Ky.



WILLIAM O. BONNIE.

Of Bonnie Bros., Distillers, Louisville, Ky.

## DISTILLERS.

J. T. S. BROWN &amp; SONS.



DAVIS BROWN.

J. T. S. BROWN, SR.

CREEL BROWN.

J. T. S. BROWN, JR.

HEWITT BROWN.

## DISTILLERS.



**BERNARD BERNHEIM.**  
Of Bernheim Bros., Distillers, Louisville, Ky.



**D. H. RUSSELL.**  
Secretary and Treasurer "Old Times" Distillery  
Distributing Co., Louisville, Ky.



**JOHN W. SLACK.**  
President John W. Slack Co., Distillers, Louis-  
ville, Ky.



**NATHAN M. URI.**  
Sole Member Firm N. M. Uri & Co., Distillers;  
Thirty-second Degree Scottish Rites; St.  
George Lodge F. A. M.; Commercial Club;  
Knights of Honor, Louisville, Ky.

## DISTILLER AND WHOLESALE LIQUORS



HILMAR EH RMANN.

Distiller and Wholesale Liquor Dealer, Louisville, Ky.



WILLIAM PATTERSON, JR.

Wholesale Liquors; Commission Merchant; Louisville, Ky.

## WHISKY, WINES AND LIQUORS.



CHARLES SCHIMPELER.

Wholesale Whiskies, Wines and Liquors, Louisville, Ky.



AUGUST HOLLENBACH.

Wholesale and Retail Wines; only strictly first-class wine house in Louisville, Ky.



**BREWERS.**

**SENN & ACKERMAN BREWING CO.**



**FRANK SENN.**

President Senn & Ackerman Brewing Co., Louisville, Ky.



**PHILIP ACKERMAN.**

Vice-President and Manager Senn & Ackerman Brewing Co., Louisville, Ky.



**FRANK P. SENN.**

Treasurer Senn & Ackerman Brewing Co., Louisville, Ky.



**EDWARD GEORGE HILL.**

Secretary Senn & Ackerman Brewing Co., Louisville, Ky.

## BREWERS



JOHN F. KELLNER.

Pres. Frank Fehr Brewing Co.; Member Masonic Order (Blue Lodge No. 137 Scottish Rite Knights Templar and Mystic Shrine); Member Commercial Club; Board of Trade; Vice-Pres. Ger. Sec. Bank, Louisville, Ky.



FREDERICK F. KELLNER.

Solicitor Frank Fehr Brewing Co.; Member Masonic Order (Blue Lodge No. 137 Scottish Rite Knights Templar and Mystic Shrine), Louisville, Ky.



JOHN FRED OERTEL.

Proprietor Butchertown Brewery, Louisville, Ky.



THEODORE MENK.

Proprietor Lexington Street Brewing Co., Louisville, Ky.

BREWERS, DISTILLERS' SUPPLIES.



JOHN E. WALTER.

John E. and Frank Walter, Proprietors Clay Street  
Brewery, Louisville, Ky.



FRANK WALTER.

John E. and Frank Walter, Proprietors Clay Street  
Brewery, Louisville, Ky.



WILLIAM PALMER.

Proprietor Clifton Brewery, Louisville, Ky.



JOHN W. BILES.

President The Turkey-Drier Co., Distillers' Sup-  
plies, Louisville, Ky.

## PACKERS, STOCK YARD COMPANIES.



HENRY F. EMBRY.

President Conrad Provision Co., Pork Packers;  
Tatum, Embry & Co., Live Stock Commission  
Merchants, Louisville, Ky.



LOUIS P. BORNWASSER.

Pork and Beef Packer, Louisville, Ky.



BENJAMIN H. HURT.

President Central Stock Yards Co., Louisville, Ky.



G. ALLEN BIRCH.

Superintendent Bourhen Stock Yards Co., Louis-  
ville, Ky.

## MEATS.



GOTTLIEB LAYER.

Meats; President New Southern Malting Co.; Park  
Commissioner, Louisville, Ky.



HENRY STRAUS.

Meats, Louisville, Ky.



WILL F. HOERTER.

Meats, Louisville, Ky.



JOSEPH GATTERDAM.

Meats, Louisville, Ky.

## FUNERAL DIRECTORS.



JOHN MAAS, JR.

Funeral Director; President of the Falls Cities  
Funeral Directors' Association, Louis-  
ville, Ky.



HENRY SCHOPPENHORST.

Funeral Director and Embalmer; Vice President  
Funeral Directors' Association, Louis-  
ville, Ky.



AL. S. SMITH.

Funeral Director; Secretary of the Falls Cities  
Funeral Directors' Association, Louis-  
ville, Ky.



HENRY BOSSE, JR.

Funeral Director; Treasurer Funeral Directors'  
Association, Louisville, Ky.

## FUNERAL DIRECTORS, CARRIAGE CO.



LORENZO D. PEARSON.

Of L. D. Pearson & Son, Funeral Directors;  
oldest undertaker in State, fifty-five years  
in business, Louisville, Ky.



EDWARD C. PEARSON.

Of L. D. Pearson & Son, Funeral Directors; Treas-  
urer Kentucky Funeral Directors' Associa-  
tion, Louisville, Ky.



JOHN C. SCHILDT.

Of C. Schildt & Son, Funeral Directors; Corre-  
sponding Secretary Kentucky Funeral  
Directors' Association, Louis-  
ville, Ky.



JOHN E. ROCHE.

President Louisville Carriage Co.; Roche, Hydes  
Co.; first to introduce the automobile in  
Kentucky; Secretary and Treasurer  
Walkers Creek Coal & Coke Co.,  
Louisville, Ky.

## LIVE STOCK BROKERS LIVERYMEN, MAIL CONTRACTOR.



CLIFTON TATUM.

Senior Member of the firm of Tatum, Embry & Co., Live Stock Commission Merchants; also of J. F. Kurfess Paint Co., Louisville, Ky.



W. DOUGLAS ROACH.

Live Stock Broker, Horse and Mule Dealer, Shipper of Mules and Horses, Louisville, Ky.



GARRET D. WILSON.

Livery and Sale Stables, Horsemen's Headquarters; the finest and best equipped stable in the world, Lexington, Ky.



M. R. PORTMAN.

Government Mail Contractor; Liveryman; Member Red Men, Cherokee No. 8, Louisville, Ky.



## TOBACCO WAREHOUSES BROKERS, CLEARING HOUSE.



EDWARD J. O'BRIEN.

Tobacco Broker; President Louisville Leaf Tobacco Exchange, Louisville, Ky.



JAMES S. PHELPS, SR.

Retired Tobacco Merchant; identified with the tobacco trade for over forty years, Louisville, Ky.



CHARLES A. BRIDGES.

Senior Member of firm of C. A. Bridges & Co., Proprietors Pickett Tobacco Warehouse; Former President Louisville Leaf Tobacco Exchange Louisville, Ky.



ISHAM BRIDGES.

Son of Chas. A. Bridges; Manager Louisville Clearing House; Secretary Kentucky Banking Association; Pendennis Club, Louisville, Ky.

## TOBACCO WAREHOUSES--WORKS.



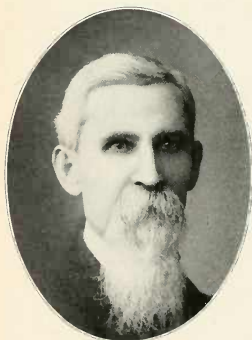
JAMES M. BUCKNER.

President Buckner Tobacco Warehouse Co.,  
Louisville, Ky.



JOHN G. HARRIS.

Of Meguiar, Harris & Co., Managers Ninth Street  
Tobacco Warehouse, Louisville, Ky.



LABAN M. RICE.

Of Rice & Turner Tobacco Warehouse, Louis-  
ville, Ky.



FERDINAND J. PFINGST.\*

Former Proprietor of National Tobacco Works,  
Louisville, Ky.

\*Died June 18, 1901.

## BREEDERS OF RACE HORSES, FARMERS.



JOHN T. HUGHES.

Owner and Dealer in Fancy Horses; Farmer;  
native of Fayette County; a self-made man.  
Lexington, Ky.



MAJOR BARAK G. THOMAS.

Breeder of Race Horses; many great race horses  
have been given by him to the turf; Hira  
Villa, six miles north of Lexington, Ky.

## TURFMAN, TOBACCO BUYER.



W. M. WALLACE.  
Turfman, Lexington, Ky.



E. CARL FRANKE.  
Tobacco Buyer, Louisville, Ky.

## SEED GROWER, HORTICULTURIST, FARMERS.



C. FRANK WOOD.

Of firm of Wood, Stubbs & Co., Growers, Importers and Exporters of Seeds of all kinds, Louisville, Ky.



EDWARD F. WETSTEIN.

Horticulturist; Secretary and Treasurer Gardeners' & Farmers' Market Co.; Vice-President Deaconess Home and Hospital, Louisville, Ky.



CHARLES C. SPALDING.

Farmer; Graduate of St. Mary's College; Member Legislature from Marion County, two terms; Delegate Dem. Nat. Con., Kansas City; Member Dem. State Campaign Com., Lebanon, Ky.



E. G. MCGINNIS.

Farmer, Eminence, Ky.

## FLORISTS.



HENRY NANZ.

Secretary and Manager Nanz & Neuner, Inc., Florists, founded 1850, incorporated 1896.  
Louisville, Ky.

HERBERT G. WALKER.  
Florist, Louisville, Ky.EDWARD G. REIMERS.  
Florist, Louisville, Ky.JOSEPH E. MARRET.  
Florist, Louisville, Ky.

## MERCHANTS.

GROCERY, HARDWARE.



WILLIAM E. GRINSTEAD.

Of firm W. E. Grinstead & Co., over forty-six  
years in the wholesale grocery business,  
Louisville, Ky.



F. T. GUNTHER.

Wholesale Grocer; Vice-President National De-  
posit Bank, Owensboro, Ky.



J. P. FRANK.

President J. P. Frank Grocery Co., Wholesale  
Grocery and Hardware, Danville, Ky.



C. P. CECIL, JR.

Merchant, Grocery, Hardware, etc., Danville, Ky.

## MERCHANTS.

GROCERY



JOHN KIEFFER.  
Groceries and Provisions, Louisville, Ky.



PAUL A. NEFF.  
Grocer, Louisville, Ky.



CHARLES V. WOODS.  
Grocer, Louisville, Ky.



JOSEPH W. IRVINE.  
Grocer, Lebanon, Ky.

## MERCHANTS.

GROCERY, HARDWARE, WHOLESALE PRODUCE.



CHARLES E. RUNYAN.  
Grocer, Louisville, Ky.



FREDERICK KLUSMEIER.  
Groceries and Provisions, Louisville, Ky.



BEN. J. DURHAM.  
Hardware Merchant, Louisville, Ky.



DAVID B. SPERRY.  
Wholesale Produce, Louisville, Ky.



## MERCHANTS.

WHOLESALE PRODUCE.



WALTER S. MITCHELL.

President National League of Commission Merchants of United States; of firm of Mayer, Mitchell & Co., Wholesale Produce, Louisville, Ky.



HARRY R. WHITESIDE.

Wholesale Produce; President Jobbers' Association of Louisville, Ky.



WALTER S. MAYER.

Of firm of Mayer, Mitchell & Co., Wholesale Produce and Foreign Fruits, Louisville, Ky.



ALFRED E. MAYER.

Of firm of Mayer, Mitchell & Co., Wholesale Produce and Foreign Fruits, Louisville, Ky.

## MERCHANTS.

INVENTOR, JEWELER, CEMENT DEALER.



ROBERT L. MARSHALL.\*

Inventor of Notable Watch Appliances; Jeweler  
and Optician; Watch Inspector for Illinois  
Central Railroad, Elizabethtown, Ky.



PAUL C. BARTH.\*

Cement Dealer; with Utica Lime Co. twenty-five  
years, Louisville, Ky.

\*Photographs received too late for proper classification.



















<http://stores.ebay.com/Ancestry-Found>

<http://stores.ebay.com/Ancestry-Found>